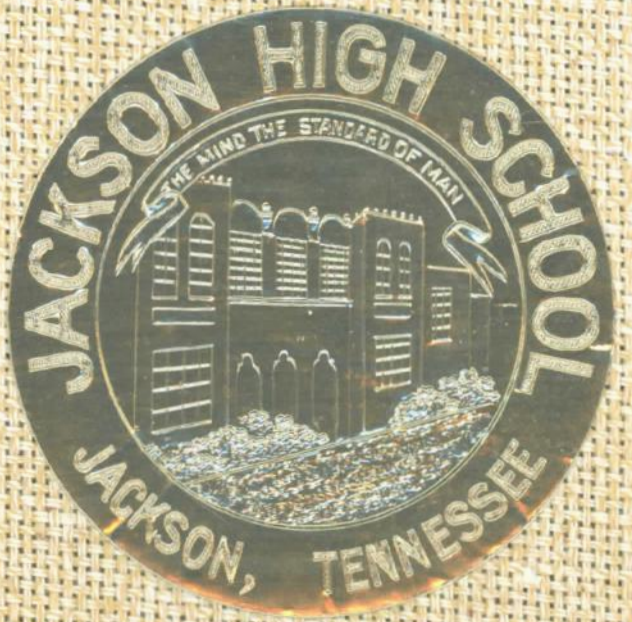


TALLER '68





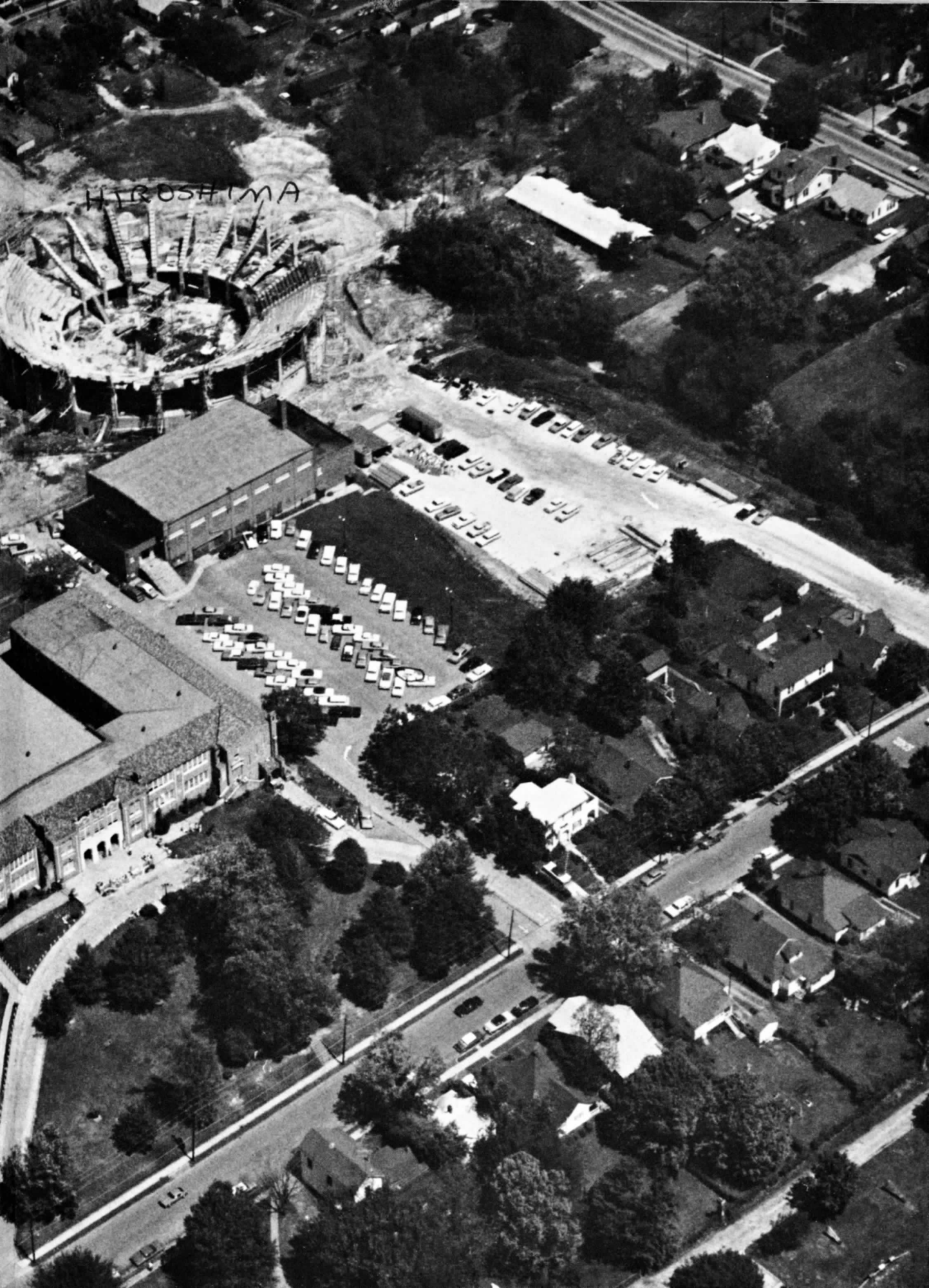
THE TATLER

PUBLISHED BY THE
SENIOR CLASS OF 1968
JACKSON HIGH SCHOOL
JACKSON, TENNESSEE

VOLUME XXXIX



HIROSHIMA



George,

It has
been fun this
year. I'm glad
that I had
some classes
with you. Good
luck in the
future.

Kay

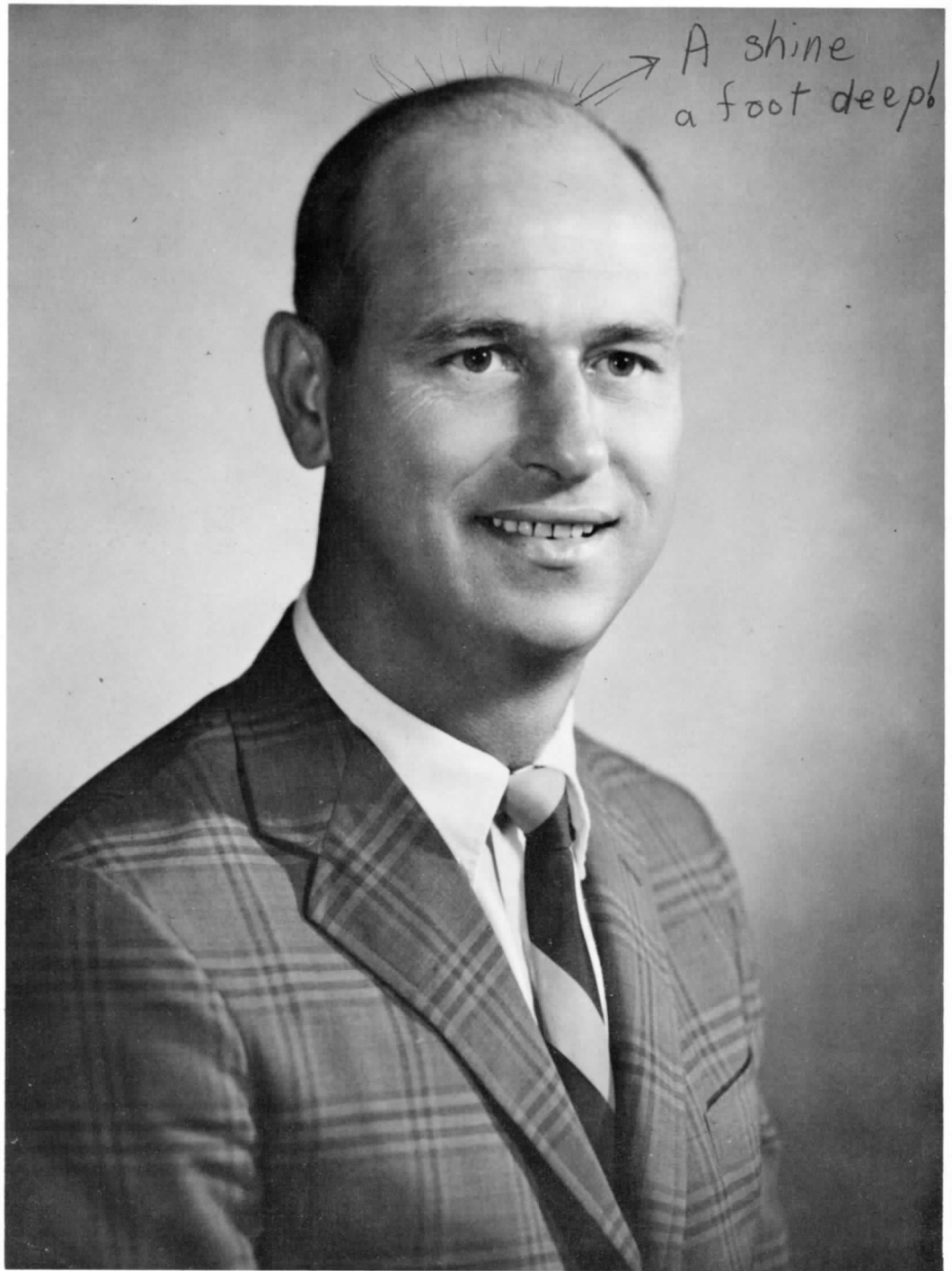


Academics

*they are called teachers . . .
without them, the race
would be rugged;
the goal, impossible to reach . . .*



*with them,
obstacles disappear,
and the race
is all but won.*



DESPITE THE EVER-DEMANDING responsibilities which faced Mr. Tom Fann as principal of Jackson High School, he headed the administrative department with efficiency and determination. Mr. Fann possessed the rare combination of discipline and friendliness toward the students, accomplished by his judgement and an active interest in "student-centered" school activities.

Mr. Fann received his B.S. from Tennessee Polytechnic Institute and his M.A. from George Peabody College.

Thirty-Seven Administrators

Inspired Student Body

MR. FRED STANDLEY, Superintendent of City Schools and MR. KENNETH WATLINGTON, Assistant Superintendent, discussed plans for the new Andrew Jackson Elementary School. Prior to their present positions, each held the office of principal at Jackson High School, and were therefore fully aware of the problems which faced both students and faculty. Mr. Standley received his B.A. from Lambuth College, his M.A. and his M.E. from George Peabody College, and Mr. Watlington received his M.A. from George Peabody College after receiving his A.B. from Lambuth College.



*I almost forgot about
DR ROOSTER NOSE.
Brown*



MR. JOHN RUKAVINA, serving as assistant principal, kept things running smoothly while Mr. Fann tended to business which took him away from school. Mr. Rukavina taught senior math, geometry, and two classes of driver's education. He graduated from Hibbings Junior College and Union University, from which he received his B.S. degree. His M.A. was granted by Memphis State University.

MRS. VIRGINIA BURKHEAD and her staff had an enormous job satisfying the ever-hungry multitudes at JHS.

MRS. KARL JOHNSON not only carried out her assigned functions at JHS but assisted faculty members as well.

MRS. PAT KYLE, assistant secretary, kept up with the school's clerical and financial records as well as performing other secretarial duties.

MISS FRANCES CROSSON, guidance counselor, advised students in making important decisions concerning college and many other problems which faced them. She received her B.A. from Union University and her M.A. from George Peabody College.



*Best wishes
— 15 —
Frances Crosson*

Textbooks,



CRAIG RALLS discovered that waiting until the night before the deadline to write his term paper proved less rewarding than his wildest expectations.

*Good luck,
Mrs. G. Adams*

MRS. HELEN MAHAFFY, B.A., Harding College. Democracy, Sociology, English II; Future Teachers of America.

MRS. PAT LITTLE, B.A., Lambuth College. English III; Speech; National Thespian Society.

MRS. MARIE G. ADAMS, Associate in Arts, Sullins College; A.B., University of Kentucky. English III; Annual Tatler Literary Staff.

MRS. CRYSTAL BYNUM, A.B., Union University. English II, Latin I; Student Council, Latin Club.



MISS BETTY EDWARDS, B.A., Lambuth College. English II, English IV; National Honor Society.

MRS. FRANCES CAGLE, B.A., Lambuth College; M.A., Peabody College. English IV; Monthly Tatler Literary Staff; Literary Anthology.

MRS. BEVERLY R. HALL, B.A., Lambuth College. English IV, Business English; National Honor Society.

MRS. MARJORIE HUNT, B.S., Union University. English II, III; Annual Tatler Business Staff.

*Best wishes,
Beverly Hall*

Themes, Term Papers Torment English Students

Beaming with fresh interpretations of literary works and a growing knowledge of grammar, English students completed another year with a well-rounded foundation for future studies. This was accomplished in part by the welcomed arrival of the new books for the English department.

Sophomores were taught the proper development and usage of the many aspects of grammar, and then entered the "wonderful world of Shakespeare" as they read and analyzed JULIUS CAESAR.

Composing themes gave the juniors the opportunity to express themselves and even at times to "let their imaginations run wild." Then it was back to reality with a change from preceding years as HAMLET replaced MACBETH in the new literature books. Never fear, though, for MACBETH was required as outside reading. Also helping fill the agenda for the junior English classes were plays such as Oliver Goldsmith's SHE STOOPS TO CONQUER and PYGMALION by George Bernard Shaw.

Seniors combined knowledge previously stored with the logic and information of noted authorities to complete their term papers in order to meet the deadline. Extensive studies were made of the literary accomplishments of various American authors and the development of American literature from the Colonial Period through the Twentieth Century.

American literature was also a major factor in a course of business English which was not offered at JHS in previous years. This course helped students learn effective usage of the English language in the business world.

Speech students were compelled to probe into the creative faculty of the mind in order to write and present effective speeches. Skill in logical reasoning, gathering evidence, and persuasiveness were all evaluated by the manner in which several debates were conducted. Speech students who were especially interested in debate and showed an outstanding ability in this field did research on the current national high school debate

MRS. LITTLE spent a portion of her first year at J.H.S. enjoying the fellowship of other members of the faculty at



THE ARRIVAL of the new literature books assured Barbara Beasley, Anneita Cunningham, Mona Boren, and Betsy Black an intriguing year of English III.

topic and were involved in various debate tournaments. In addition to regular classroom activities, students from the speech classes made regularly intervaled reports on activities concerning Jackson High School as announced on the local radio station.

the lunch table, where the teachers search for a noon-time "Shangri-la."



Increased Lab Study and Expanded Classroom Space



MISS SARAH ELSTON, A.B., Union University; M.A., Memphis State University. Latin II, French I, II; Latin Club, French Club.



MRS. FRANCES BOONE, A.B., University of North Carolina; B.S., Louisiana State University. Librarian; Library Club.

*Best wishes
F. Boone*



MRS. KATE ALGEA, B.A., Bethel College. Spanish I, English II, Typing; Spanish Club.



MISS BETSY KING, B.A., Lambuth College. Spanish I, II, III; Spanish Club.

Increased enrollment in the language department at JHS this year necessitated Miss King's Spanish classes' demanding a larger room. The added space in this new classroom was filled with a table and chairs, thus making it an ideal place to do research for term papers.

Spanish I and II students found the language lab beneficial to learning. Extra practice time was allotted in the mornings before regular classes began for those students who wished to improve their foreign enunciation. Students emphasized sentence construction in grammar and spent long hours deciphering literature. The third year Spanish students had lectures entirely in Spanish and found taking notes was necessary to insure

accurate understanding. To broaden their knowledge of the culture of Spain, they studied the works of famous authors.

French students learned that perfection was almost impossible to attain although hours of practice helped considerably.

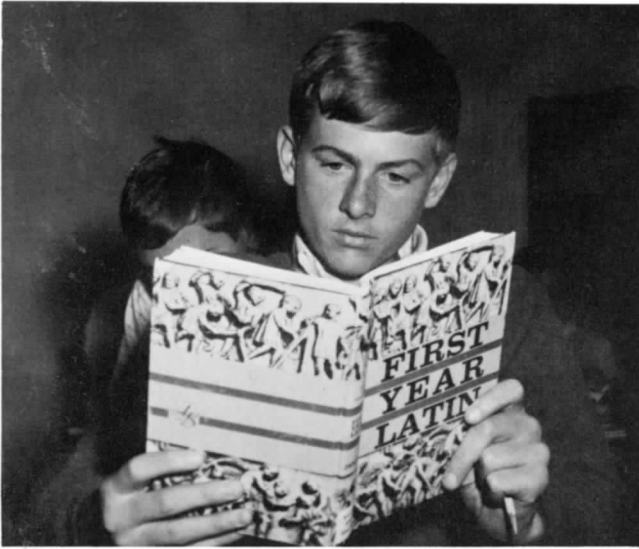
The JHS curriculum was forced this year to annex another Latin class because of the intensified demand of students. Latin I students, under the enthusiastic leadership of Mrs. Bynum, were happy to find that new textbooks had replaced the worn ones of previous years. These books gave the students a stimulating insight to the majestic civilization of Rome.

"IT'S A TURN-DOWN DAY" for many students as they

obeyed Miss Elston's "Asseyez-vous!" in French II.



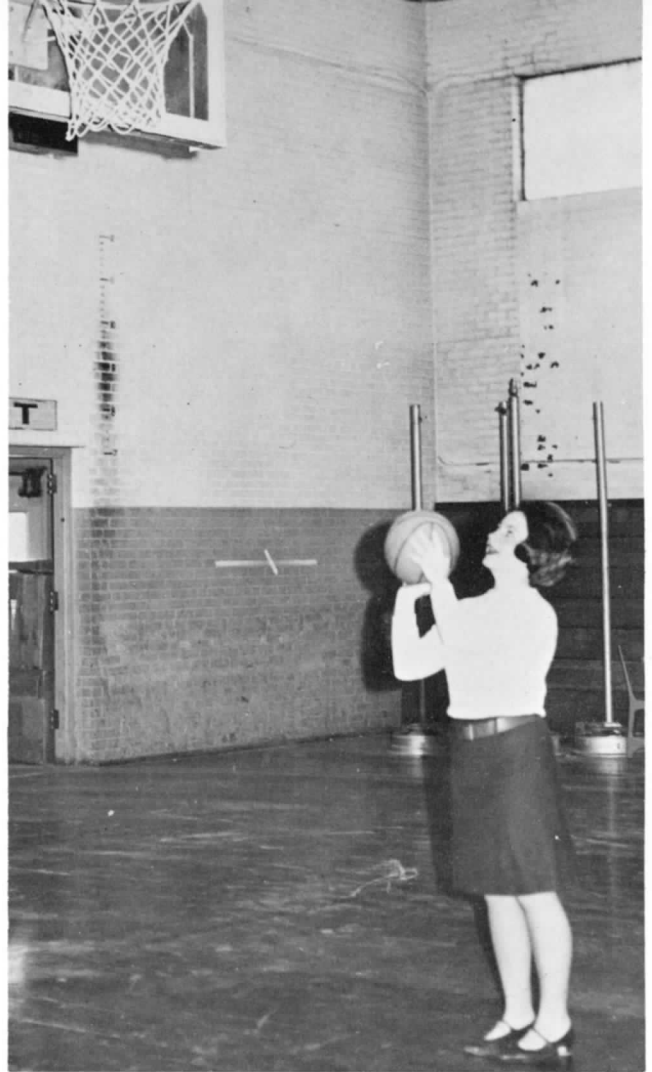
Aided Language Students



INQUISITIVELY, Doug Easley absorbed himself in his new Latin textbook.

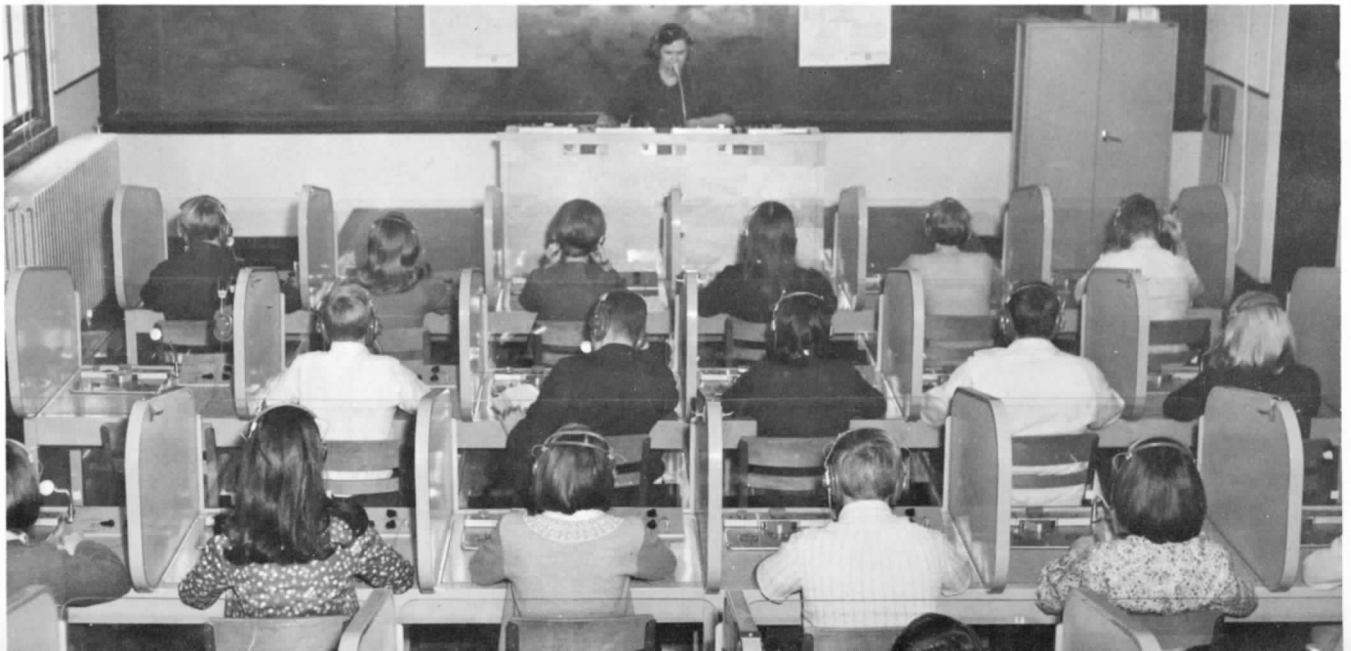
This summer, as an extension to their language and culture studies, sixteen students will accompany Miss Betsy King and her mother on a month-long tour of Europe. Exploring the landmarks of England, France, Italy, and Austria, the students will receive four college credits. On June 22 the Jackson students will meet other youth from all over the United States in New York City. A lecture program will acquaint the students with the education aspects of the sites to be visited. After arriving in Europe, the young people will investigate these landmarks and make many side-trips as well. Several Jackson High students in other years have attended this tour, but this year is the first time such an active interest has been shown.

"REPITAN USTEDES en espanol por favor," was the message received by Mrs. Algea's Spanish students as they listened to



AFTER SAYING "ADIOS" to her "estudiantes," Miss King delighted in the swish of the basketball.

sentence construction on tape in the ultra-modern language laboratory in the east wing.



Inquiry, Exploration, Discovery, and Analysis



TRIP STEGALL and Earline Kitchens found precision instruments, nimble fingers, and strong stomachs are necessary tools for dissecting.

Discovering the unknown was the task of all students in the JHS science department this year.

In the biology department the proper procedure for dissecting was stressed. Students were shown that knowledge of necessary tools was needed as well as careful planning before making the first incision.

Through experiment, observation, and many computations, chemistry and physics students learned how to prove many laws. The overhead projector furnished students with enough information to make these proofs in the laboratory.

These students, working with scientific tools, broadened their minds to cope with new discoveries.

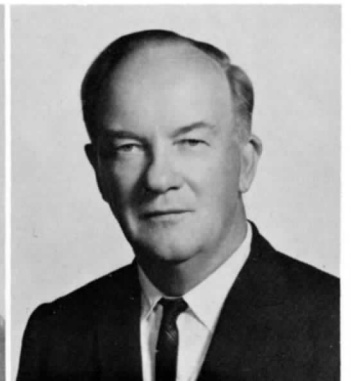
J. L. Jones

MR. LAWRENCE JONES, B.S., University of Notre Dame; M.S., University of Tennessee. Biology; Biology Club.

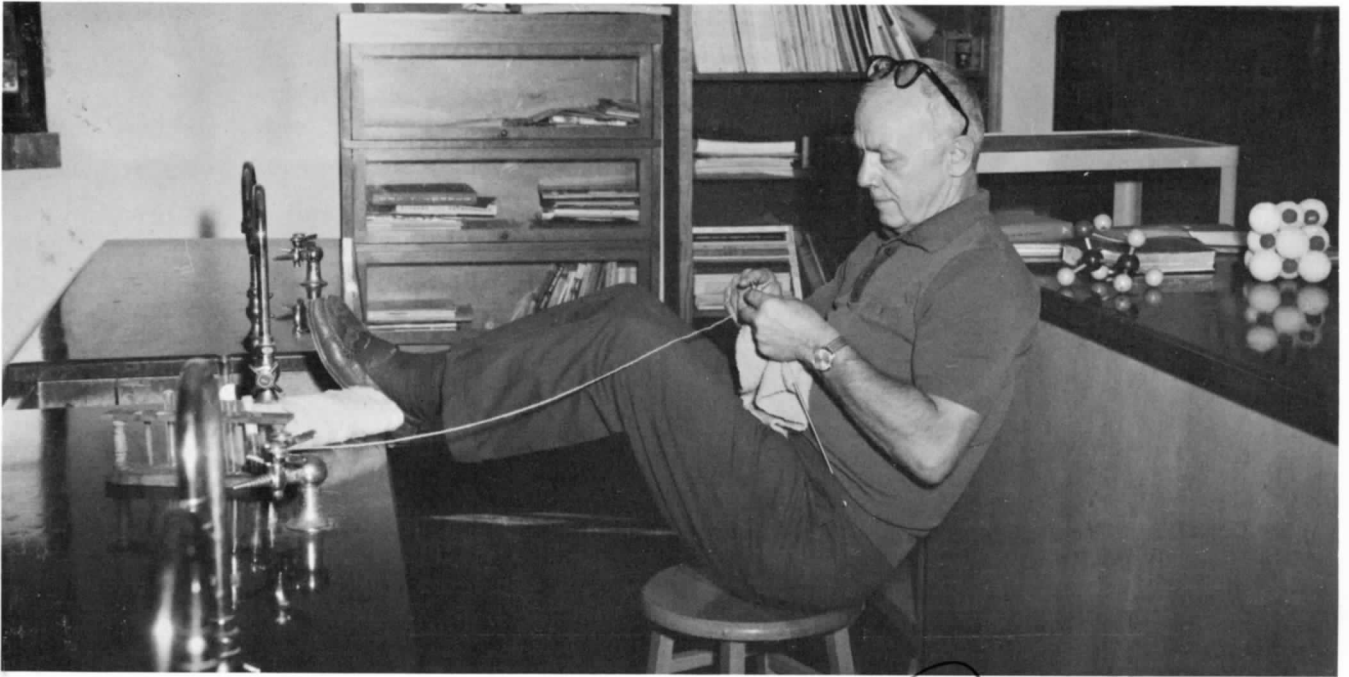
MR. RAYMOND GRADY, B.S., Austin Peay State University. Algebra I, Chemistry, Physics.

MR. JOHN PECHONICK, B.S., Union University; M.A., Peabody College; M.A., New Mexico Highlands University. Chemistry I, II, Physics; Coach, Science Club.

MR. TURY OMAN, B.S., University of Wisconsin. Biology, Mechanical Drawing; Coach, Biology Club.



Were Basic Components of Scientific Research



MR. PECHONICK obviously found a scientific way to pass a slip stitch over a knit stitch after yarning over without leaving

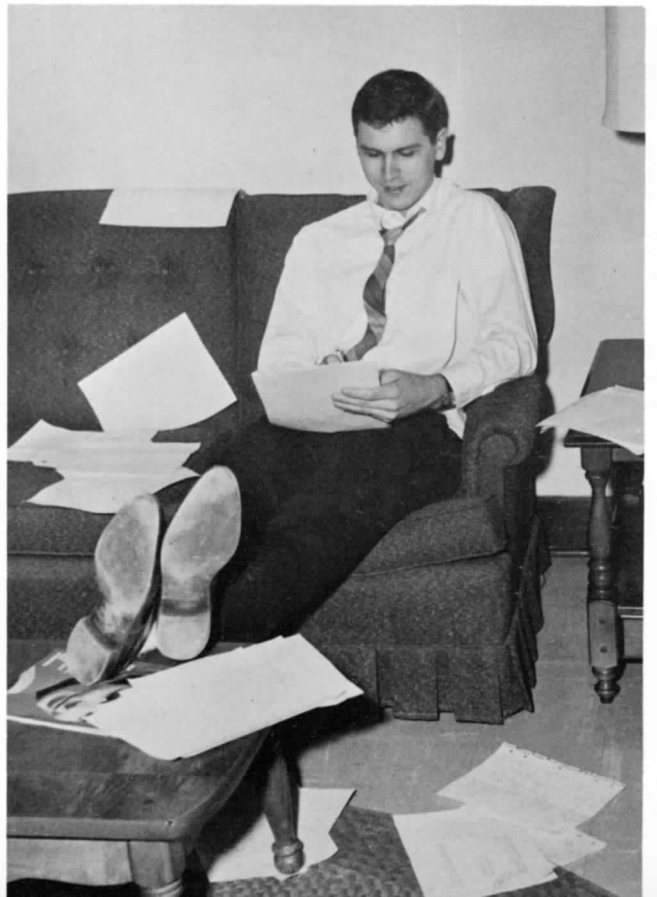
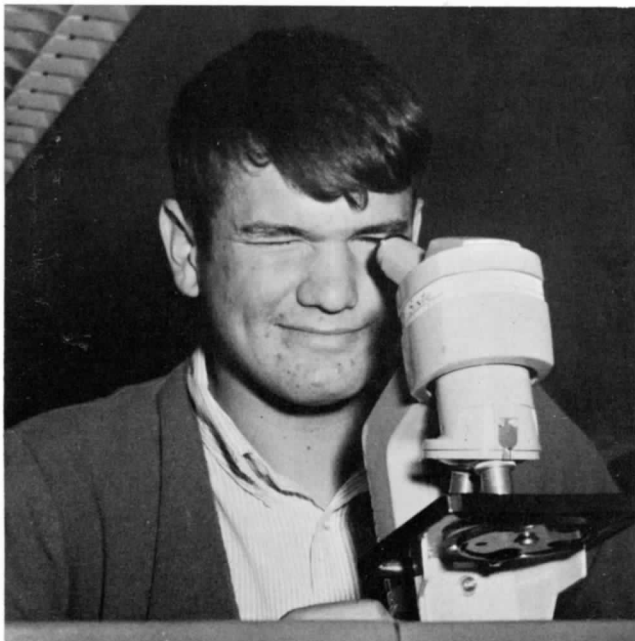
holes which were not included in the original directions.

John Pechonick

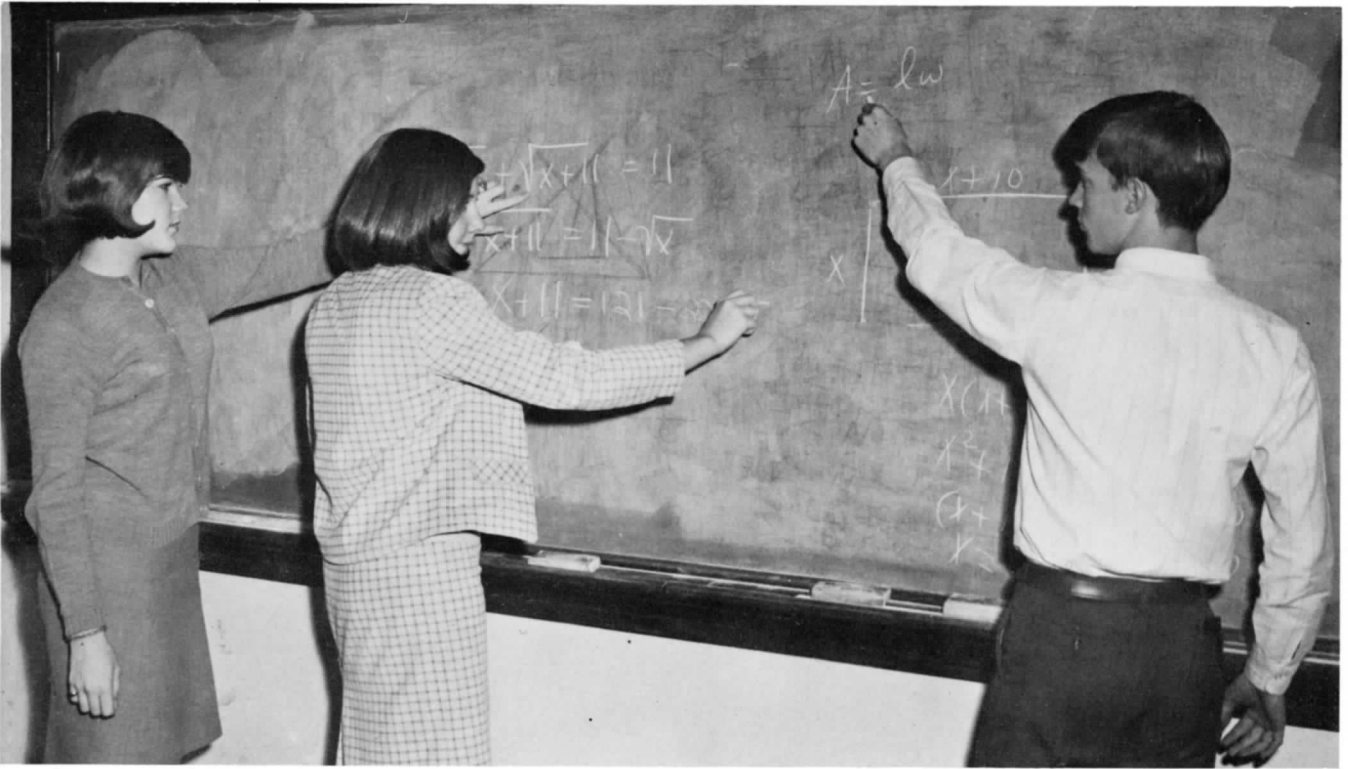
*Bubba,
Maybe if we
could knit, we could
make A's in Physics
Good luck!
Eddie (Kin)
E*

HOME FROM AN exhausting day, Mr. Grady relaxed and pondered over pupils' perplexing papers.

PARADOXICALLY, Charles Patterson diminished one eye and consequently enlarged a microscopic biological world.



Equations and Proofs Were Included



HAVING A DIFFERENCE of opinion, Betty Michie, Kay Callahan, and Monte McAlexander each explained his own

procedure for solving one of the many perplexing problems in Algebra II.

MR. NEWMAN found great personal satisfaction in doing "odd jobs" around his home. The wrought-iron railing on his front porch received finishing touches from the "man of the house."

BOB GOODSON assisted Judy Barefoot in hanging models to be used by Mr. Galbraith in demonstrating geometric principles to his students.



In Stimulating Mathematics Curriculum

Students of the higher mathematics wondered if Browne's theory that "All things began in order, so shall they end, and so shall they begin again . . ." was completely infallible. Certainly, mathematical proofs seemed to follow no order at all! Eventually, however, the light was seen and once again a student was set aright on the road to the correct solution.

By use of the four fundamental functions, Algebra I students learned to find the correct value of as many as three unknowns. Experimentation with factoring, signed numbers, and basic algebraic theories rounded out the course.

Building on the background of Algebra I, classes of Algebra II tackled the more solving graphic equations and formulas concerning imaginary numbers.

Unified geometry produced numerous enigmatic proofs to be solved by logic and reason. Deciphering the hidden geometric theorems involved presented great challenge to the student taking this course. One did not emerge from a year of geometry without the full meaning of the Pythagorean Theorem.

For students serious in pursuing a career in mathematics, a Senior Math course was offered. The foundation of Algebra I and II and Geometry provided the knowledge necessary for understanding the more advanced theorems of trigonometry.

Continuous stress was placed on inducing the math student to think rather than mimic the teacher. Mathematics proved to be an unforgettable landmark in the minds of all students involved.

PYRAMIDS GREW from yardsticks held by senior math students Susan Merriweather, Duke Martin, and George Parr,



MRS. ALTA FREEMAN, B.S., Lambuth College; M.A., Memphis State University. Algebra II, Geometry; Junior Class, Mu Alpha Theta.

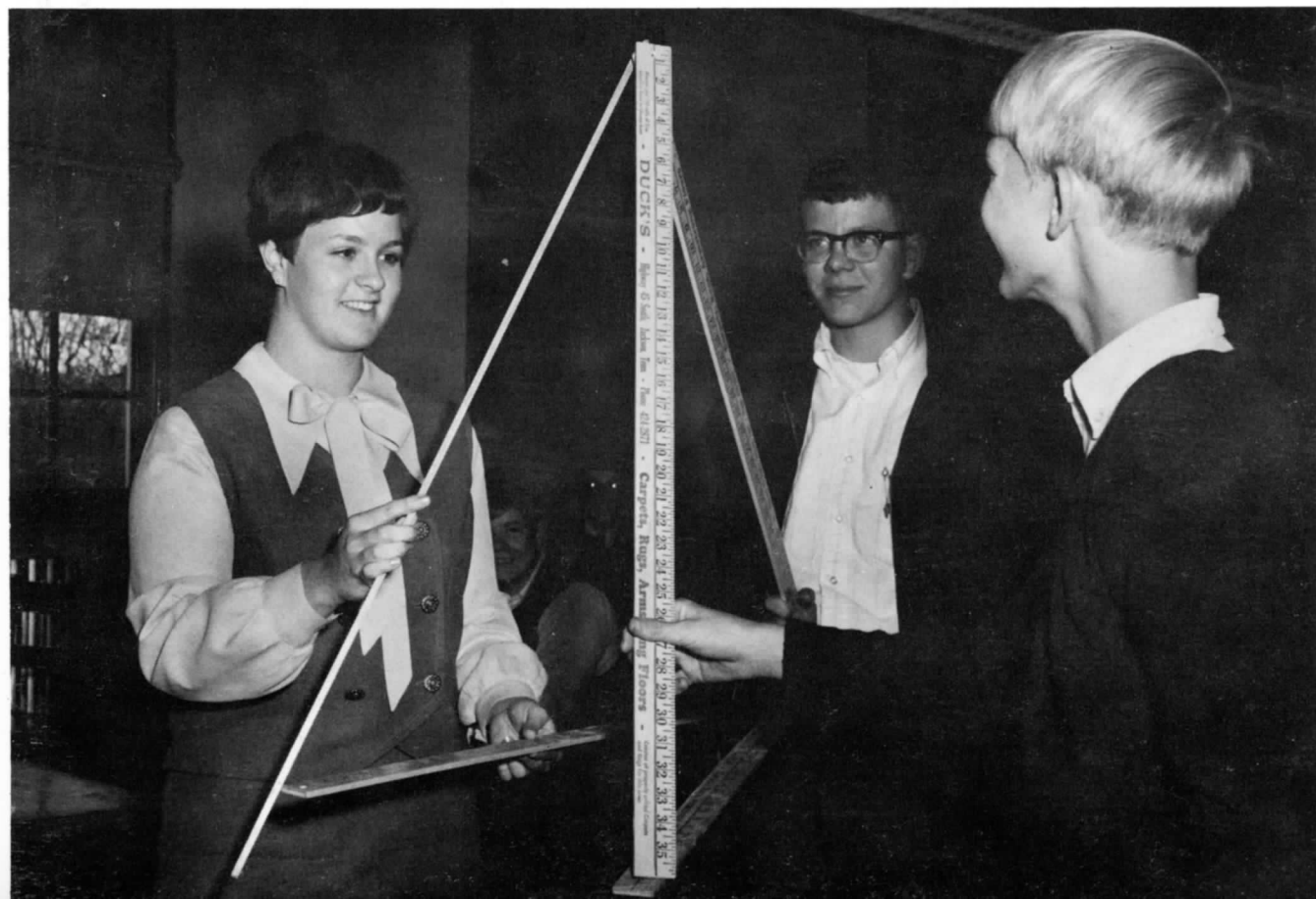
MR. JOE GALBRAITH, B.S., Union University; M.A., Memphis State University. Geometry; Mu Alpha Theta.



MR. DONALD NEWMAN, B.S., Bethel College. Algebra I, II, Senior Math.

*Best of luck George
D Newman*

and thus demonstrated the construction of three-dimensional figures, proving that seeing is believing.



Understanding Landmarks of Our Past



UNDER WALTON MULLINS' careful surveillance of the screen, Mr. Hicks adjusted the machine to correct specifications.

Henry Ford once said, "History is bunk." Obviously he had never attended Jackson High School or any institution of secondary education comparable to it. History need not be dull; it can come alive in the mind of the industrious student.

American history, the making of a nation, was required of all senior students. Panel discussions, *American Observers*, outside reports and films are variations from the ordinary classroom lectures. World maps increased our knowledge of our country in relation to the rest of the world, while editorials and cartoons related the feelings of the people.

World history students tried to trace the history of the entire world and its peoples as they endured famine, strife, wars, and progress. Having only one year in which to recreate thousands of years made a relatively slow-moving world pulse with excitement and change.

By studying economics, a practical aspect of history, students became aware of its part in the culture of America. Learning the reasons for depressions, wars, and inflation is only a small part of the years' study. Tracing the evolution of this democratic system of economy yielded considerable challenge to all economics students.

A look into the sociology and democracy classes revealed a study in depth of the Constitution, its operation and enforcement, and the principles behind it. The discovery of the molding of a society melted together from the various established cultures of the Old World better enabled these students to face the world of American democracy and the masses therein.

World Geography was added this year to the social studies curriculum at Jackson High, in which a definite connection was shown between the outward development of the geography of the world and the inward progress of its history.

Historical landmarks are easy to find and hard to forget when they are so vividly pictured in the minds of any student eager to learn and ready to face the future—a future which becomes history for generations to follow.

John P. Petty

MISS EMMA INMAN WILLIAMS, A.B., Washington University; M.A., University of Chicago. American History; Annual Tatler Literary Staff.

MR. JAMES HICKS, B.S., University of Tennessee-Martin Branch; M.A., Memphis State. Economics, World History; "J" Club.

MR. JOHN PETTY, B.S., University of Tennessee-Martin Branch. American History, World Geography.

MRS. GLADYS ROBERTSON, B.S., Union University. World History; Junior Red Cross.



Gave Students Better Understanding of Today

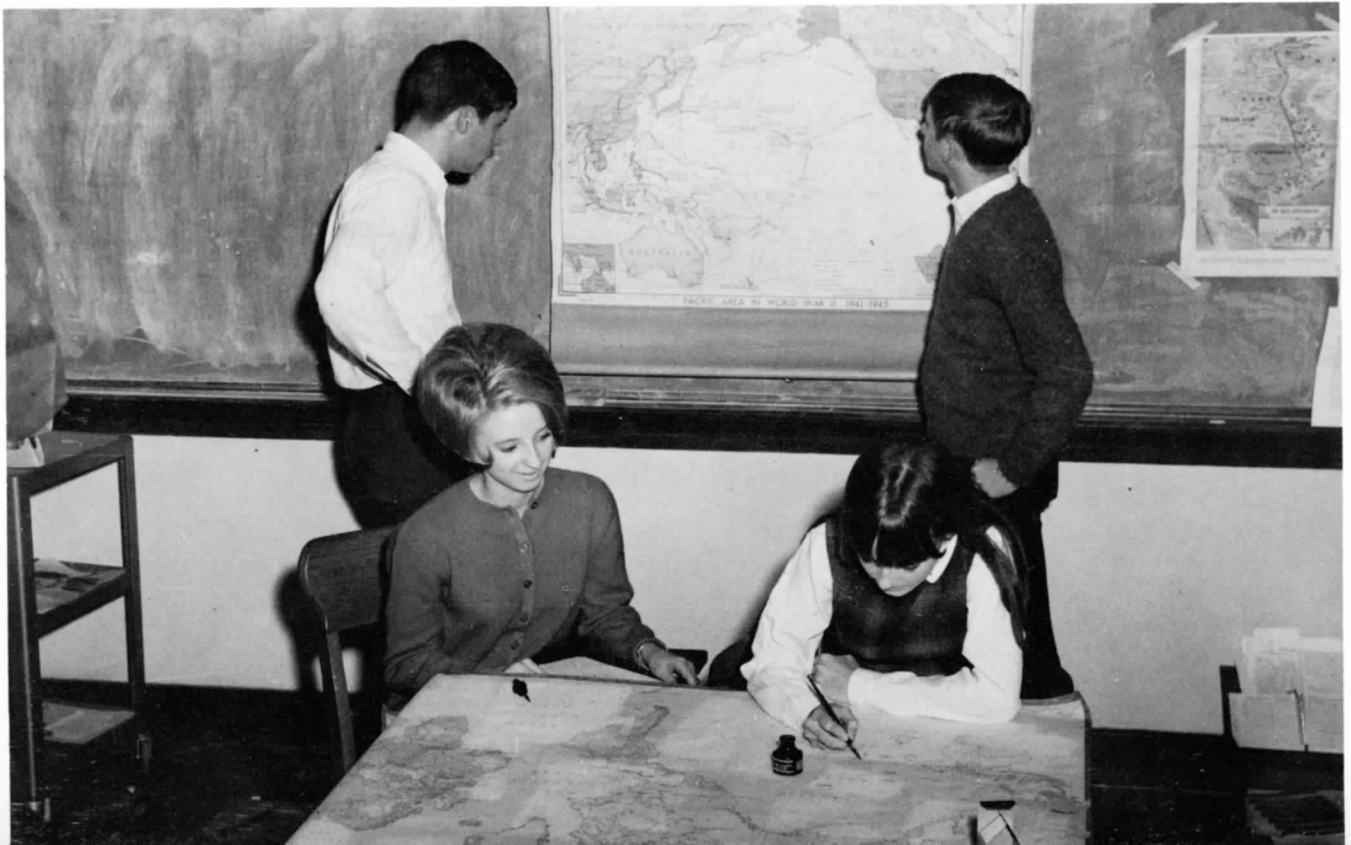


"IF WE PUSH with all our might, we may reach the game tonight," Mr. Petty, the dauntless chaperon, mumbled as he

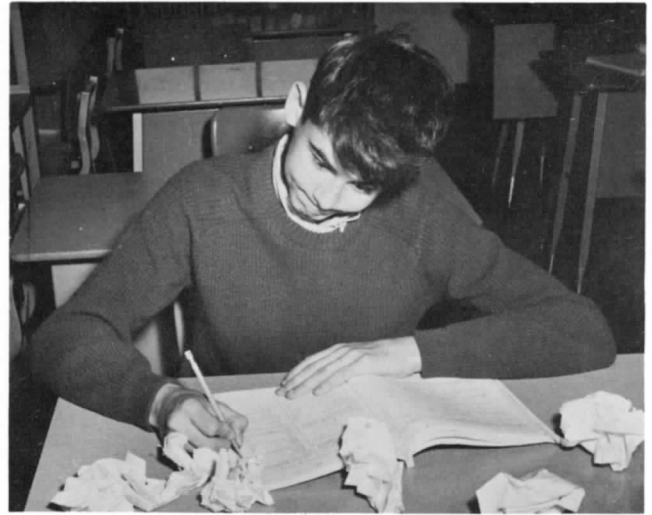
packed in the last football fan.

PAT EDWARDS and Rodney Puckett studied the intricate details of world geography and offered aid to Diane Perkins

and Cindy Walker in creating their own world map, a project in American History.



Intricate Skills Acquired



DETERMINED TO conquer the future business world, Steve Vantrees made one last effort to solve a somewhat complicated problem in his general business workbook.

MRS. MARGARET SHELTON demonstrates the "above and beyond" teaching concept while vacuuming the new carpet which was a welcomed addition to the typing room.



Margaret Shelton

MRS. MARGARET SHELTON, A.B., Lambuth College, Typing, Shorthand; Monthly Tatler Literary Staff.

An understanding of general business was gained by viewing the business world through the consumer's eyes, while experience in bookkeeping helped in qualifying students for future business occupations.

Whereas shorthand students previously shared a desk with a typewriter, this year's students were assigned new desks with ample space for developing accuracy in taking dictation. New carpeting and the new furniture enhanced the beauty of the room where typing students learned to use various typewriter parts and the proper techniques for improving typing skills.



MRS. LOUISE ROBERTSON, B.A., Blue Mountain College. Bookkeeping, General Business; Monthly Tatler Business Staff.

MRS. JENNIE LOU PHILLIPS, B.S., Union University; M.A., Memphis State University. Algebra I, General Business, Shorthand; Future Business Leaders of America.

In Business and Home Economics Classes



MISS MARY DOAK, B.S., Union University; M.S., University of Tennessee. Home Economics; Future Homemakers of America.



"A WATCHED POT never boils," surmised Mary Ann Medlin, but "all systems were go" for Brenda Horn, Jane Dickens, and Carol Harris concerning other meal preparations.

Step by step, home economics girls learned the proper way to create a dress as tantalizing as the meals they prepared in the kitchen. Being able to read both a pattern and a recipe correctly were necessities taught to all girls upon entering a first year home economics classroom. When this essential was made clear, the girls were then ready to cope with the actual mechanics of cooking and sewing.

Nutrition, just barely touched upon in first year classes, was studied in greater depth in second and third year courses. Being able to plan a well-balanced menu was just as important to the young homemaker as being able to execute the actual preparation of the meals. Child care and home nursing was also examined in the more advanced home economics.

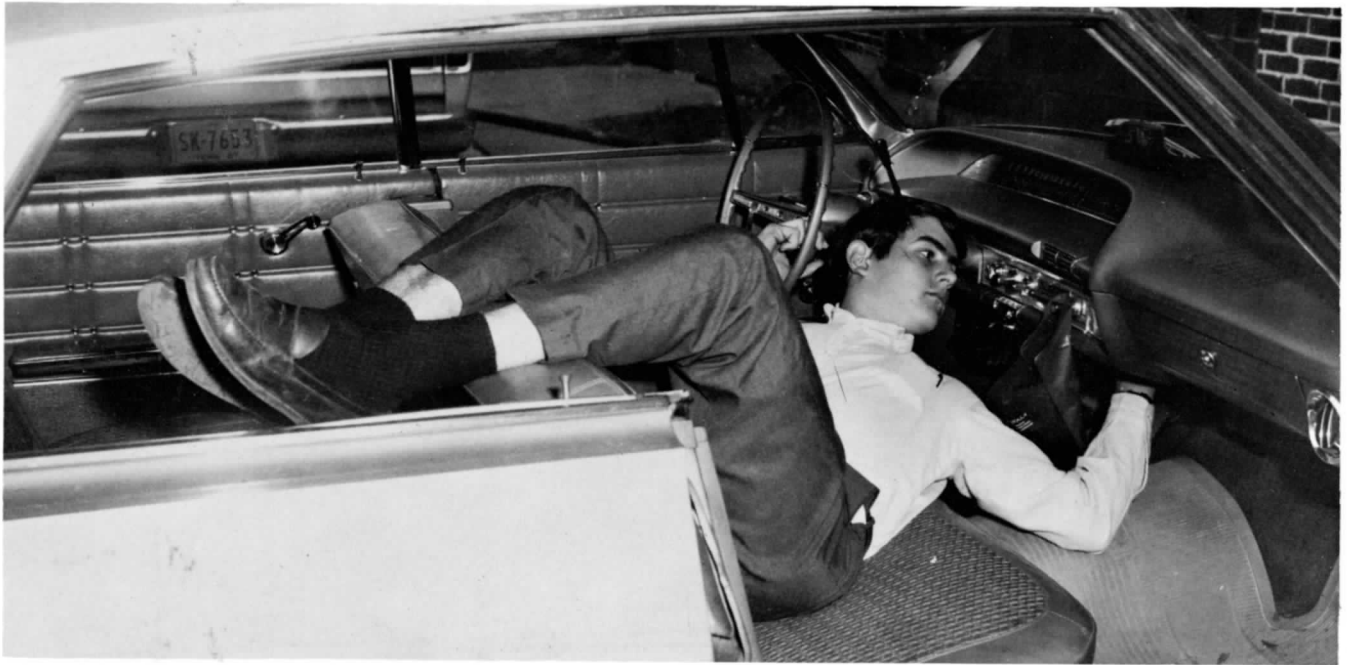
Since the first year girl was just beginning her education in the art of sewing, dresses, and skirts of workable materials were their main concern. Such was not the case of the advanced student. Her basic knowledge already in mind, the second and third year home economics students made suits and dresses of the cumbersome fabrics, such as wools and bonded knits. These girls rarely failed to achieve the goal of an attractive, well-fitted garment.

The concerted efforts of home economics students and Miss Doak created a background on which the girls could build for future happiness.

"SO I SAVED a dime using a new detergent, but I lost my senior ring!" wailed Jan Elam frantically searching for her most prized possession in a mountain of soap suds.



Future Salesmen Received Important Tips

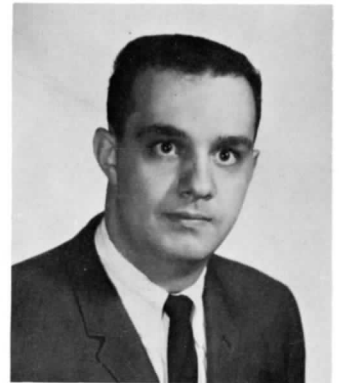


TRANSISTORS OR TUBES is the question Robert Spragins faces in his attempt to solve the mechanics of installing his

stereo-tape attachments to his car.



MR. STEVE DENTON, B.S., University of Tennessee. Distributive Education, General Business; Distributive Education Club.



MR. HARRY IVEY, Vocational Certificate in Trades and Industries, University of Tennessee. General Metal Trades; Trades and Industries Club.

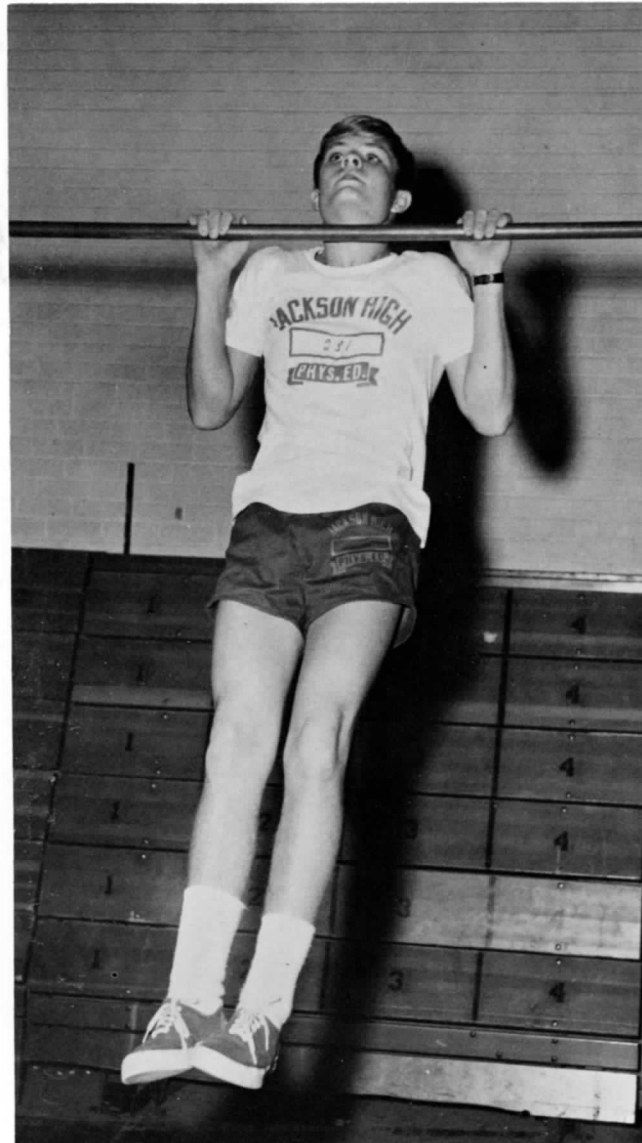
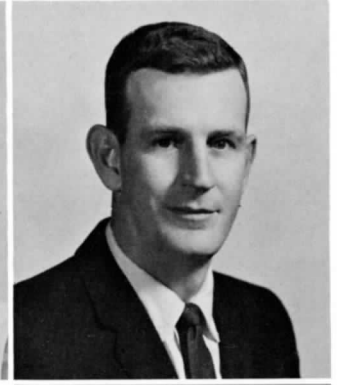


ARRANGING a sales display, Bonita Davis attempted to convince David Blackwell that a touch of femininity was essential in any worthwhile project.

"Ups and Downs" Brought On Aching Muscles

MISS EDYTH WORTHY, B.S., Tennessee Polytechnic Institute; M.A., George Peabody College. Physical Education; Senior Class, Cheerleaders.

MR. RICHARD ROSS, B.S., Union University; M.A., Memphis State University. Physical Education; Coach, "J" Club.



MR. JAI FLYNT, B.S., Tennessee Polytechnic Institute. Band (Marching, Concert, and Stage); Pep Band.



ONE, TWO, UP, DOWN! Rhythm and balance insured Candy Lane of necessary exercise.



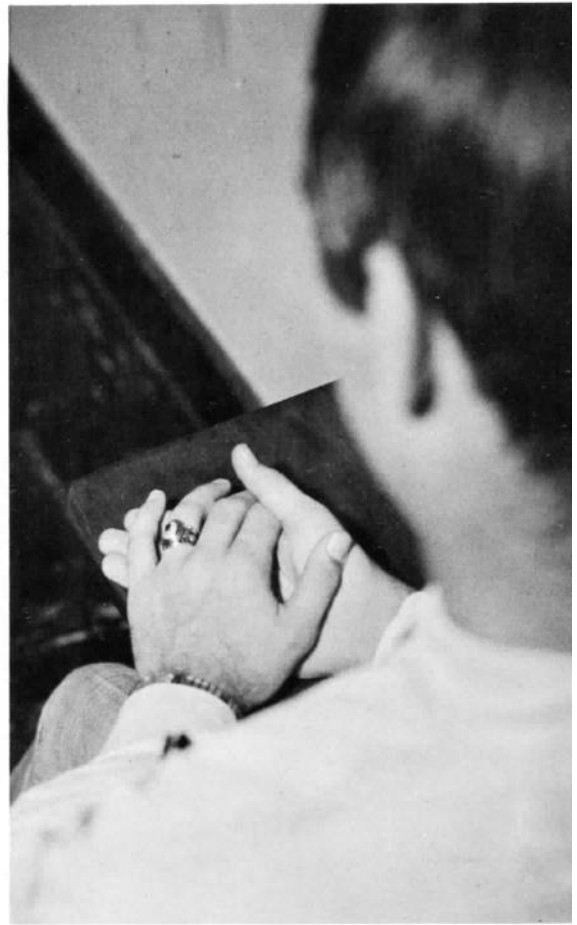
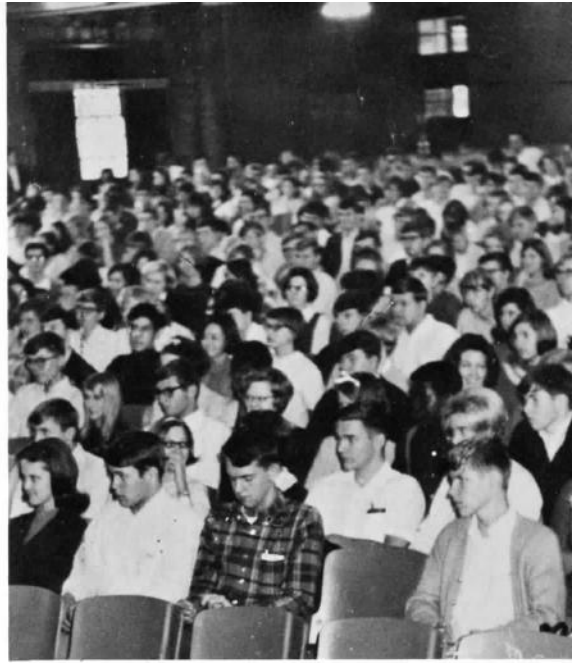
LIVING UP TO the J.H.S. Alma Mater of sounder bodies, Johnny Marshall exercised with "pull ups."

"Babba",
Finally wise
Seniors! Can you believe,
You've been a great
friend through high school
and I hope it stays
that way. Good luck
in the future, which
we are all about to
enter.
Love,
Jerry



Seniors

*products . . . finished products
of twelve years.
years that contained all of the
problems, solutions, sorrows, joys,*



*changes, and consistencies
that life, itself
has to offer.*

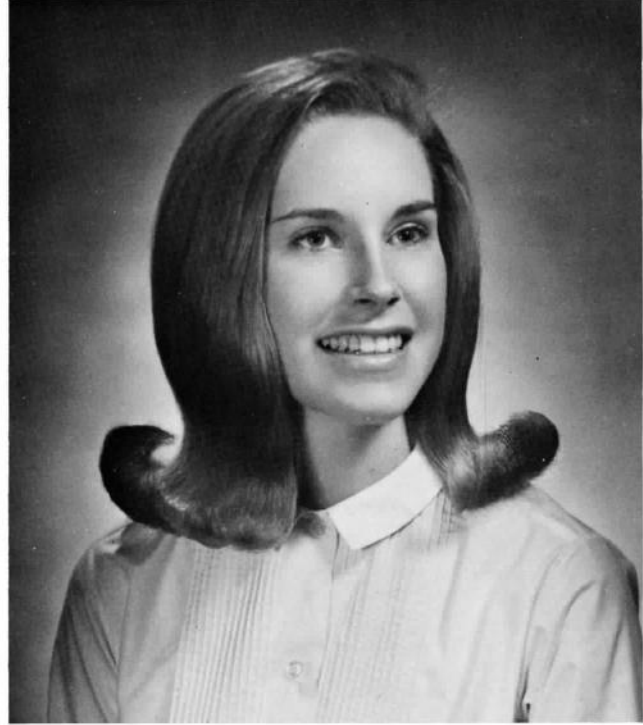
Four Girls and Two Boys Won Top Scholastic Honors



VALEDICTORIAN

96.3

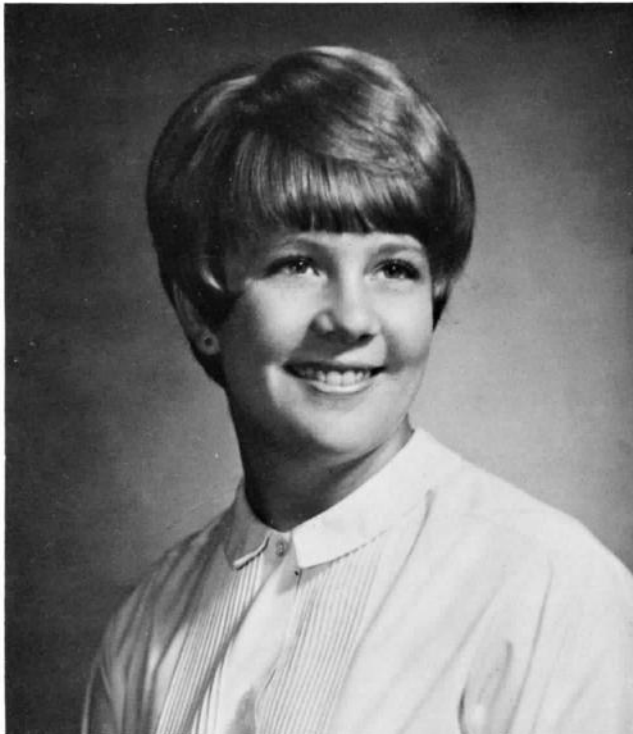
REBECCA* "BECKY" KOONCE—Latin Club '66; Junior Red Cross '66; Regional Math Contest '66; Class Treasurer '67; French Club '67; Future Homemakers '67; Delegate to Camp Miniwanca '67; National Honor Society '67, '68; Mu Alpha Theta '67, '68; Student Body Treasurer '68; Annual Tatler Literary Staff '68.



SALUTATORIAN

95.875

SUSAN SCOTT—Regional Math Contest '66; Spanish Club '66, '67; French Club '67; Delegate to Girls' State, Best Citizen '67; American Field Service Exchange Student to Brazil '67; Future Teachers '67, President '68; Annual Tatler Literary Staff '67, '68; Mu Alpha Theta '68; National Honor Society '68.



ESSAYIST

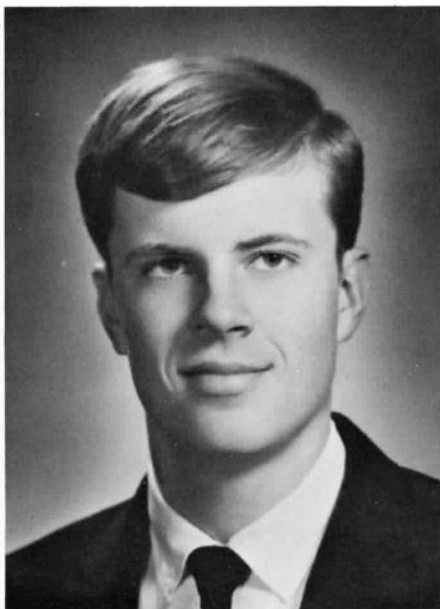
94.937

FRANCES "FRANCIE" GRAVES—Student Council '66, '67; Spanish Club '66, '67; Delegate to Camp Miniwanca '67; Basketball Cheerleader '67, '68; National Honor Society '67, '68; French Club '67, '68; Vice-President for Girls '68; Basketball Royalty '68.



94.933

ANN STOVALL—Student Council '66; Spanish Club '66, '67; Mu Alpha Theta '67, '68; National Honor Society '67, '68; Thespian Society '67, '68; Monthly Tatler Literary Staff '67, '68; Annual Tatler Literary Staff '67, '68.



94.875

DAVID THURMOND—Biology Club '66; Band '66, '67, '68; Latin Club '67, '68; Mu Alpha Theta '67, '68; National Honor Society '67, '68; Delegate to Camp Minnawanca '67.



94.766

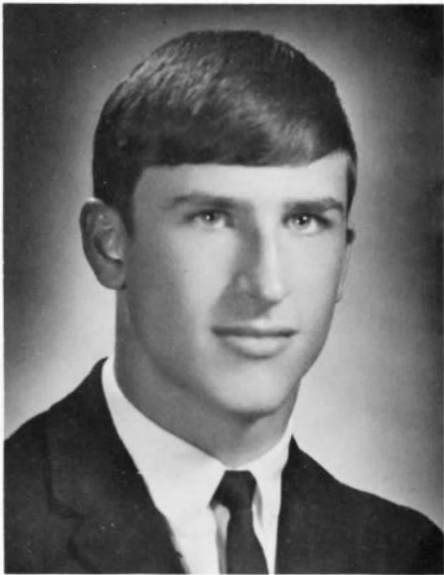
RONALD "RONNIE" CRAIG—Regional Math Contest '66; Latin Club '66, '67; University of Tennessee Summer Journalism Institute '67; National Honor Society '67, '68; Mu Alpha Theta '67, '68; Monthly Tatler Literary Staff '67, Editor '68.

TEXTBOOKS, TESTS, and term papers became landmarks for fourteen honor students who worked diligently for three and a half years and climbed to the top of their class. Only fractions away from top honors with averages ranging from 94.428 to 92.676, these students completed the top twenty of the Class of 1968. Special recognition goes to outstanding

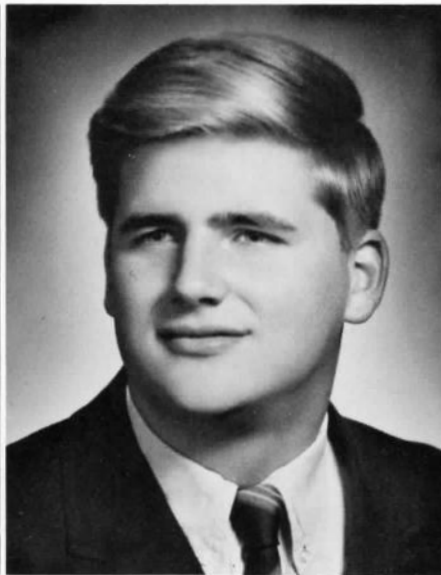
scholars Cheryl Armstrong (seated at left), Pam Preissig, Helen Barnette, Zan Acuff, Steve Turner (standing), Billy Algea, James Campbell, Susan Gascoigne (seated at right), Libba Birmingham, Alice Butts, Nancy Harrison, Bruce Brown (standing), Bill Richardson, and Charles Pearson.



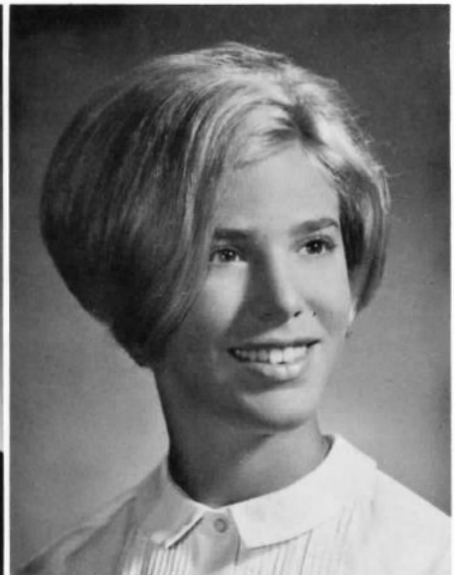
John Matlock and Oliver Benton Displayed



JOHN MATLOCK—Class President '68; Football '65, '66, '67; Basketball '66, '67, '68; Student Council '67; Track '67, '68; "J" Club '67, '68; Latin Club '67, '68; National Honor Society '68.



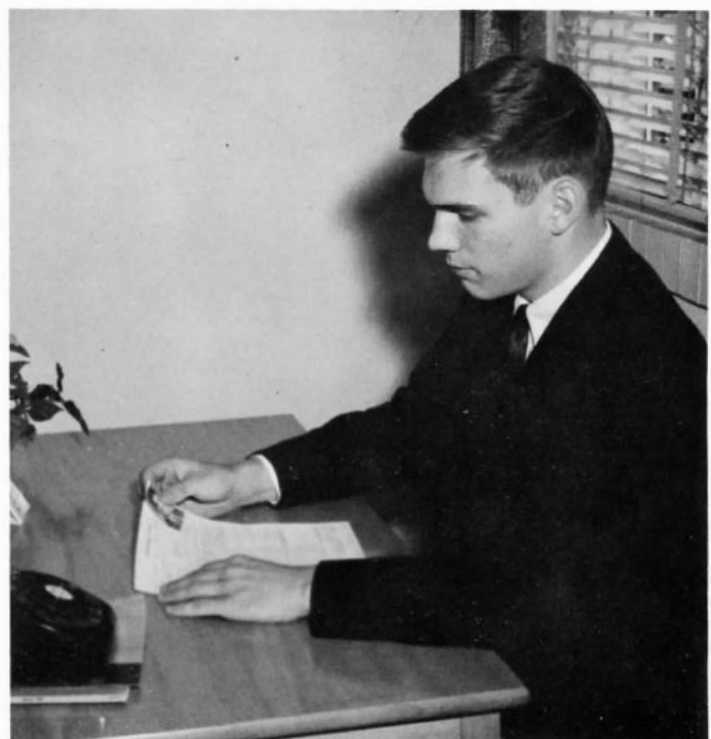
DAVID RICE—Class Vice-President '68; Football '65, '66, '67; Student Council '66; Junior Red Cross '66; "J" Club '66, '67, '68.



ELIZABETH "LIBBA" BIRMINGHAM—Class Secretary '67, '68; Student Council '66; Spanish Club '66, '67; Basketball '66, '67, '68; Delegate to Girls' State '67; Future Teachers '68; Mu Alpha Theta '68; National Honor Society '68; Basketball Royalty '68.

DANIEL "DANNY" BREEN—Class Treasurer '68; Biology Club '66; Spanish Club '67; Student Council '67, '68; Mu Alpha Theta '68; Cub Lion '68; Annual Tatler Literary Staff '68.

WITH THE HONOR of being Jackson High's only Merit Finalist, Oliver Benton earned the privilege of attending the nation's best colleges. Although Stanford University was his first choice, where Oliver will end up next fall is yet to be learned.



Outstanding Leadership and Superior Knowledge

ZANGARA "ZAN" ACUFF—Future Homemakers '66; French Club '67, '68; National Honor Society '67, '68; Mu Alpha Theta '67, '68; Annual Tatler Literary Staff '68.

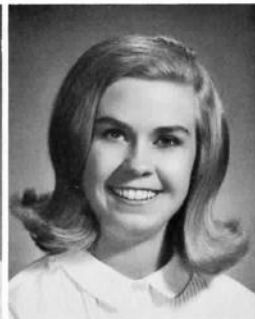
MARCIA ALEXANDER—Class Vice-President '66, '67; Future Homemakers '66, '67; Football Cheerleader '66, '67; Football Royalty '67; Spanish Club '67; National Honor Society '67, '68; Future Teachers '68; Student Body Secretary '68; D.A.R. Good Citizenship Award.

PHYLLIS ALEXANDER—Spanish Club '66, '67; Junior Red Cross '67; Future Teachers '67; Future Homemakers '67, '68; Future Business Leaders '68; Annual Tatler Literary Staff '68; Monthly Tatler Business Staff '68.

PIERCE ALEXANDER—Football '65, '66, '67; Junior Red Cross '66, '67; Future Business Leaders '66, '67, '68; Baseball '66, '67, '68; "J" Club '66, '67, President '68.

WILLIAM "BILLY" ALGEA—Biology Club '66; Spanish Club '66, '67; Band '66, '67, '68; Junior Rotarian '67; National Honor Society '67, '68; Mu Alpha Theta '67, '68; Science Club '68.

DENNIS "DENNY" ANDERSON—Latin Club '66; Band '66, '67, '68.



KATHLEEN "KAY" ANTHONY—Biology Club '66; Junior Red Cross '67; Future Homemakers '68.



CHERYL ARMSTRONG—Spanish Club '66; Future Homemakers '67; National Honor Society '67, '68.

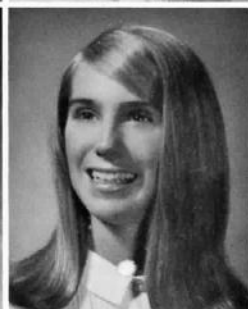
CAROL ARNOLD—Junior Red Cross '66; French Club '67; Future Homemakers '67; Future Teachers '67, '68; Future Business Leaders '68.



GEORGE BARNES—Football '65, '66, '67; Junior Red Cross '66; Spanish Club '68.

HELEN BARNETTE—Future Homemakers '66; French Club '67, '68; Mu Alpha Theta '67, '68; National Honor Society '68.

LANITA BARNETT—Junior Red Cross '66; Library Club '66; Spanish Club '66, '67, '68; Band '66, '67, '68; Thespian Society '66, '67, '68.

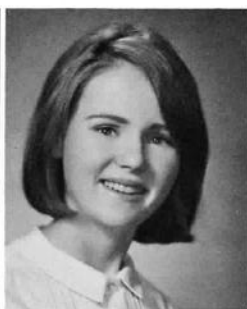


OLIVER BENTON—Football '65, '66; Spanish Club '66, '67; Science Club '67, '68; National Honor Society '68; Jackson Sun School Reporter '68; National Merit Finalist '68.

DIANE BLACKWELL—Transferred from Maynard Evans Senior High School, Orlando, Florida '67; Future Homemakers '68.

WANDA BLANKENSHIP—Biology Club '66; Junior Red Cross '66, '67, '68; Future Homemakers '67; Future Business Leaders '68; Basketball Cheerleader '68.

Cherished Memories of Miniwanca



ROBERT "BOBBY" BLOW—Football '65, '66, '67; Future Business Leaders '66, '67, '68; Junior Red Cross '66, '67, '68; "J" Club '67, '68.

DIANE BLYTHE—Future Homemakers '66, '67; French Club '68; Library Club '68.

JOYCE BOONE—Latin Club '66; Future Teachers '67; Future Homemakers '67, '68; Mu Alpha Theta '67, '68; Annual Tatler Literary Staff '67, '68.



WILLIAM BRADY—Band '66; Spanish Club '66.

DREW BREWER—Student Body President '68; Class President '66, '67; Latin Club '67; Junior Rotarian '67; French Club '67, '68; Mu Alpha Theta '67, '68; Cub Lion '68; Annual Tatler Literary Staff '68.

DOUGLAS BRINKLEY—Future Business Leaders '68.



BRUCE BROWN—Biology Club '66; Latin Club '66, '67; Band '66, '67, '68; French Club '67; Junior Rotarian '67; Delegate to Boys' State '67; Mu Alpha Theta '67, '68; National Honor Society '67, '68; Stage Band '67, '68; Annual Tatler Literary Staff '68; Science Club '68.

MARGERIE "MARGIE" BROWN—Spanish Club '66; Biology Club '66; Future Teachers '66, '67, '68; Future Homemakers '67; French Club '67, '68; Mu Alpha Theta '67, '68.

STEVEN "STEVE" BUTLER—Future Business Leaders '68.



ALICE BUTTS—Biology Club '66; Latin Club '66; Basketball '66, '67, '68; Annual Tatler Literary Staff '67; Regional Math Contest '67; French Club '67, '68; Mu Alpha Theta '67, '68; Science Club '67, '68; Monthly Tatler Literary Staff '68; National Honor Society '68.

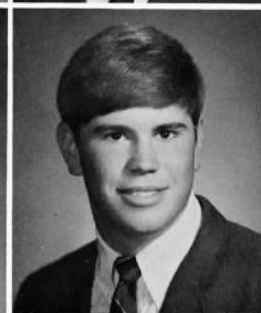
KATHY CALDWELL—Spanish Club '66, '67, '68.

ROBERT CALDWELL—Transferred from Battle Ground Academy, Franklin, Tennessee '66; Future Business Leaders '67; Annual Tatler Business Staff '68.

JAMES CAMPBELL—Spanish Club '66; Football '66, '67; Junior Rotarian '67; Mu Alpha Theta '67, '68; National Honor Society '67, '68; Cub Lion '68; Annual Tatler Literary Staff '68.

DOUGLAS "DOUG" CANTRELL—Biology Club '66; Junior Red Cross '66; Future Business Leaders '67, '68.

FRANKIE CANTRELL—Football '65, '66, '67; Junior Red Cross '66; Biology Club '66; "J" Club '66, '67, '68; Future Business Leaders '67; Student Council '68.

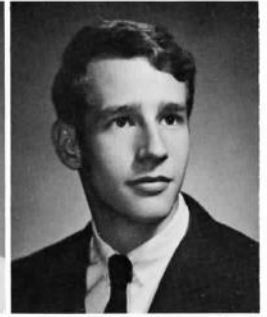


Preserved In Records and Colored Slides

DANIEL "DANNY" CARMICHAEL—Biology Club '66, Band '66, '67; Spanish Club '67.

JOYCE CARTER—Latin Club '66, '67; Future Business Leaders '68.

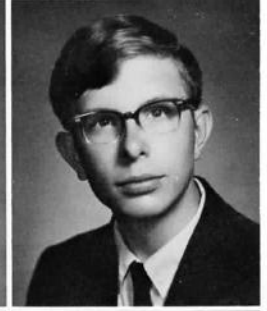
KENNETH "KEN" CARTER—Track '66.



ANN CHANDLER—Latin Club '66; Spanish Club '66, '67, '68; Mu Alpha Theta '68; Monthly Tatler Literary Staff '68; Future Teachers '68.

WALKER CHILDERS—Junior Red Cross '66; Biology Club '66; Distributive Education Club '67, '68; Future Business Leaders '68.

DANNY CHISM—Trades and Industries Club '67; Distributive Education Club '67, '68.



TERESA CLARK—Transferred from Miami High School, Miami, Oklahoma '67; Football Cheerleader '67; French Club '68; Future Homemakers '68.

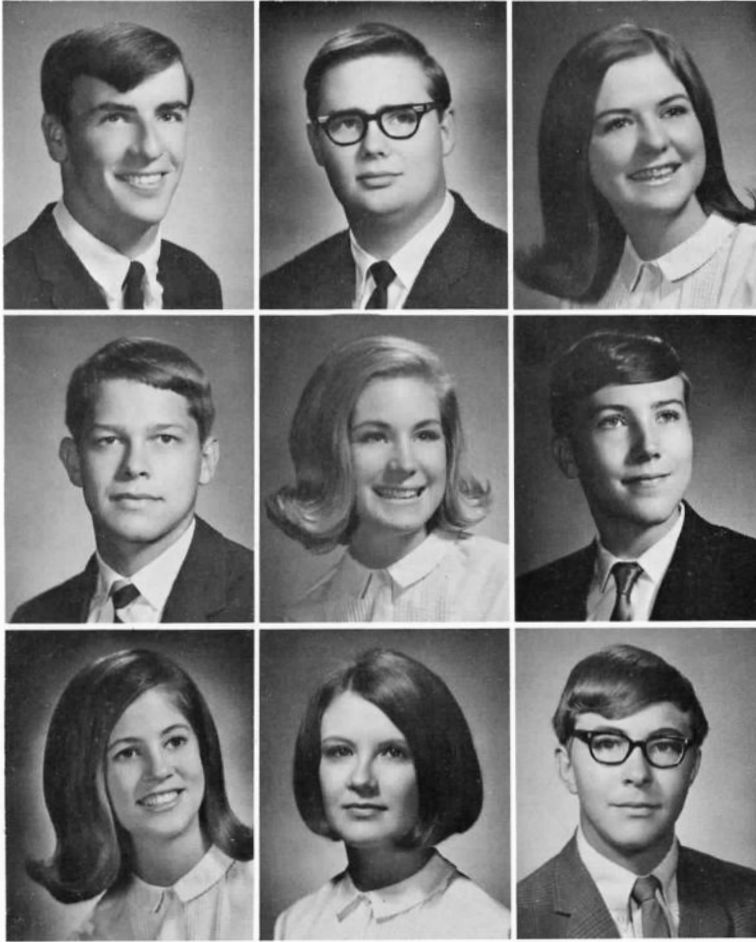
WILLIAM "BILL" CLARK—Biology Club '66; Spanish Club '67; Future Business Leaders '67, '68; Baseball Manager '67, '68; "J" Club '68; Monthly Tatler Business Staff '68; Monthly Tatler Literary Staff '68.

CLAUDE "TOOKEY" CLEMMONS—Junior Red Cross '66; Baseball '68; Future Business Leaders '68; Monthly Tatler Business Staff '68.



SLIDES AND RECORDS enabled Becky Koonce, David Thurmond, Kathy Shelton, Francie Graves, and Tommy Russell to recall cherished memories of Miniwanca. These students were chosen by the faculty to attend the leadership training camp on the shores of Lake Michigan.

Projects To Fill Class Coffers



JOSEPH "JOE" COLE—Junior Red Cross '66; Biology Club '66; Future Business Leaders '66, '67, '68; Monthly Tatler Business Staff '67; Distributive Education Club '67, '68; Track '68.

MARC COLE—Transferred from Fremont High School, Fremont, Nebraska '66; Football '66; French Club '67, '68; Baseball '68; Future Business Leaders '68.

JANET COLEMAN—Latin Club '66; Future Homemakers '67; Junior Red Cross '67; Future Business Leaders '67, '68; Monthly Tatler Business Staff '68.

KENNY COLLINS—Football '65, '66, '67; Future Business Leaders '66, '67; Basketball '66, '67, '68; Baseball '67, '68; "J" Club '67, '68.

FAYE CONE—Junior Red Cross '66, '67, '68; Future Homemakers '68.

JOHN "JOHNNY" COOK—Band '66, '67, '68; Thespian Society '66, '67, '68; Annual Tatler Business Staff '67; Spanish Club '67, '68; National Honor Society '67, '68; Science Club '68; Stage Band '68.

PHOEBE COOK—Junior Red Cross '66; Spanish Club '66; Student Council '66; Football Cheerleader '66, '67; Basketball '66, '67, '68; Future Homemakers '67; Future Business Leaders '67, '68.

MELANIE COUNCE—Junior Red Cross '66, '67; Future Business Leaders '66, '67, '68; Future Homemakers '67, '68; National Honor Society '68; Betty Crocker Future Homemaker Award.

MICHAEL "MIKE" COX—Biology Club '66; Junior Red Cross '66; Trades and Industries Club '68; Future Business Leaders '68.

EVEN INNOCENT young boys were not free from the wrath of the senior class bake sale when Kay Montgomery and Pat McManus pleaded, "Just one cookie?" Hoping to keep gra-

duation assessments to a minimum, many seniors toiled diligently to make the project a success.

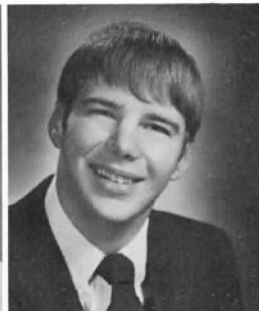


Appealed To The Young At Heart

DORIS CRAFTON—Future Homemakers '66; Library Club '66, '67, '68; Future Business Leaders '67, '68.

ROSEANNA CRICK—Future Homemakers '67; Junior Red Cross '67, '68; Future Business Leaders '68.

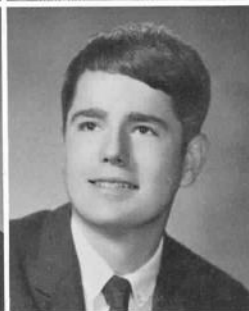
RICHARD "RICKY" CRONE—Projectionist Club '67; Future Business Leaders '68; Junior Red Cross '68.



MICHAEL "MIKE" CROWELL—Biology Club '66; Junior Rotarian '67; Future Business Leaders '67; Mu Alpha Theta '67, '68; Science Club '68; National Honor Society '68; Annual Tatler Business Staff '68; Cub Lion '68.

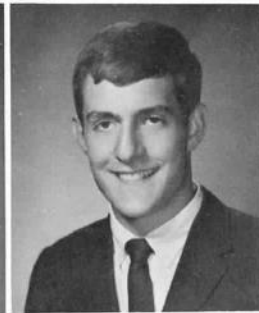
BEN "BENNIE" CURLIN—Future Business Leaders '66, '68.

KATHERINE "KATHY" DANCY—Spanish Club '66; Biology Club '66; Monthly Tatler Literary Staff '66, '67, '68; Latin Club '67; Future Business Leaders '68.

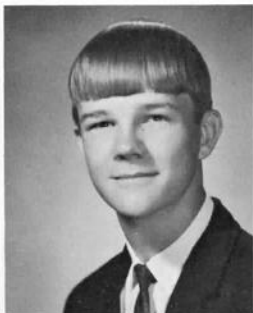


KATHERINE "KATHY" DAVIS—Biology Club '66; Class Treasurer '66; Student Council '66; French Club '67; Future Business Leaders '67, '68; Monthly Tatler Business Staff '68.

STEVE DAVIS—Football '66, '67; Basketball '67, '68; Baseball '67, '68; Future Business Leaders '67, '68; "J" Club '68.



WILLIAM DEBERRY—Annual Tatler Business Staff '68; Monthly Tatler Business Staff '68; Future Business Leaders '68.



FREDERICK "BUSTER" DEMENT—Football '65; Biology Club '66; Trades and Industries Club '68; Future Business Leaders '68; Junior Red Cross '68.

JERE DOUGAN—Biology Club '66; Monthly Tatler Literary Staff '67, '68; Future Business Leaders '68.

DAVID DOYLE—Trades and Industries Club '67, '68.



DEBORAH "DEBBIE" DUNCAN—Future Homemakers '67; Spanish Club '67, '68; Future Teachers '68; Monthly Tatler Literary Staff '68.

CECILIA EAVES—Future Business Leaders '68.

PATRICK "PAT" EDWARDS—Biology Club '66; Future Business Leaders '67, '68.

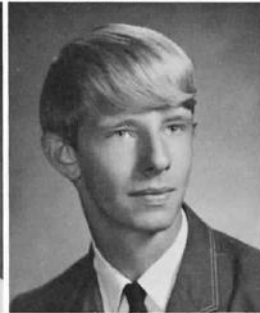
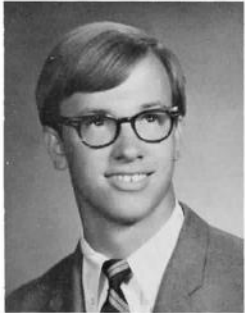
Elation and Melancholia Intermingled



JANICE "JAN" ELAM—Future Business Leaders '67; Future Homemakers '67, '68; Future Teachers '68.

MICHAEL "MIKE" ELVERT—Biology Club '66; Future Business Leaders '67, '68.

BOBBY EMERSON—Trades and Industries Club '67, '68.



JOHN "JOHNNY" FARRAR—Future Business Leaders '67, '68.

TERRY FLEMING—Spanish Club '66, '67; Future Homemakers '67; Future Teachers '68.

GEORGE "BUBBA" FLEW—Future Business Leaders '68.



DAVID FREEMAN—French Club '66; Future Business Leaders '67, '68.

JAMES "JIMMY" FREEMAN—Band '66, '67, '68; Future Business Leaders '67, '68; Thespian Society '68.



PATSY GARNER—Library Club '66, '67.

SUSAN GASCOIGNE—Latin Club '66; Debate Society '66; Monthly Tatler Literary Staff '66, '67, '68; Thespian Society '66, '67, President '68; Future Homemakers '67; French Club '67, '68; Annual Tatler Literary Staff '67, Co-editor '68; National Honor Society '67, '68.

LAURA GERSON—Future Business Leaders '68.

DAVID GIFFEN—Golf '67; Future Business Leaders '67, '68.



DEBORAH "DEBBIE" GLASSCOCK—Transferred from Morgan County High School, Hartselle, Alabama '67; Junior Red Cross '67; French Club '67, '68; Future Teachers '68; Student Council '68.

GAYLE GOODSON—Junior Red Cross '66; Spanish Club '66, '67; Future Teachers '67.

STEVEN "STEVE" GOWER—Football '65, '66, '67; Junior Red Cross '66; Future Business Leaders '68.

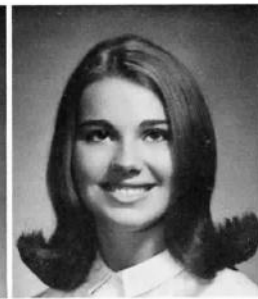
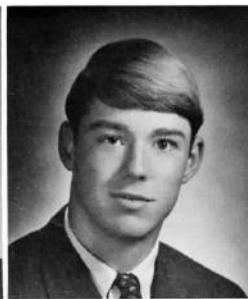
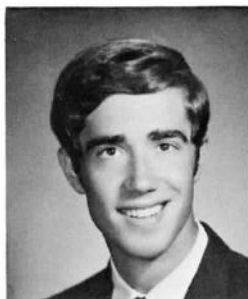


As Final Landmarks of '68 Were Reached

ALLEN GREEN—Future Business Leaders '67, '68; Mu Alpha Theta '68.

STEVEN "STEVE" GREGORY—Biology Club '66; Football '67; Future Business Leaders '68.

CYNTHIA "CINDY" GRIMMER—Junior Red Cross '66; Biology Club '66; Future Business Leaders '67, '68; Future Homemakers '67, President '68; Basketball Cheerleader '68; Student Council '68.



SAMUEL "SAMMY" GRISHAM—Band '66, '67, President '68; Stage Band '67, '68.

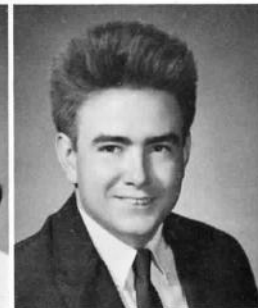
WALTER HALE—Trades and Industries Club '67, '68.

CAROLYN HALL—French Club '66; Library Club '66, '67; Thespian Society '66, '67, '68; Future Homemakers '68.



LENDON HAMILTON—Biology Club '66; Spanish Club '66, '67, President '68; Basketball '66, '67, '68; French Club '67; Future Homemakers '67; Monthly Tatler Literary Staff '67, '68; Future Teachers '68; National Honor Society '68.

DAVID HAMLETT—Trades and Industries Club '67, '68.



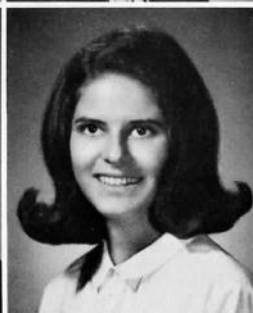
DONALD HANAFEE—Football '65, '66, '67; Biology Club '66; Junior Red Cross '67; "J" Club '67, '68; Future Business Leaders '68; Baseball '68.



WADE HARLEY—Basketball '67, '68; Track '67, '68; Baseball '68; "J" Club '68.

STANWORTH "STAN" HARRIS—Latin Club '66, '67; Regional Math Contest '67; Junior Rotarian '67; Delegate to Boys' State '67; Mu Alpha Theta '67, President '68; Annual Tatler Literary Staff '67, '68; Student Council '67, '68; National Honor Society '67, President '68; Cub Lion '68.

NANCY HARRISON—Biology Club '66; Latin Club '66; Spanish Club '66, '67; Science Club '67, '68; National Honor Society '68; Future Homemakers '68.



CHARLES HAVNER—Future Business Leaders '66; Junior Red Cross '66, '68.

SUZANNE HAVNER—Junior Red Cross '66; Biology Club '66; French Club '67; Future Business Leaders '67, '68; Annual Tatler Business Staff '68.

HARRIET HEARN—Junior Red Cross '66; Future Business Leaders '66, '67, '68; Future Homemakers '67, '68; Future Teachers '68.

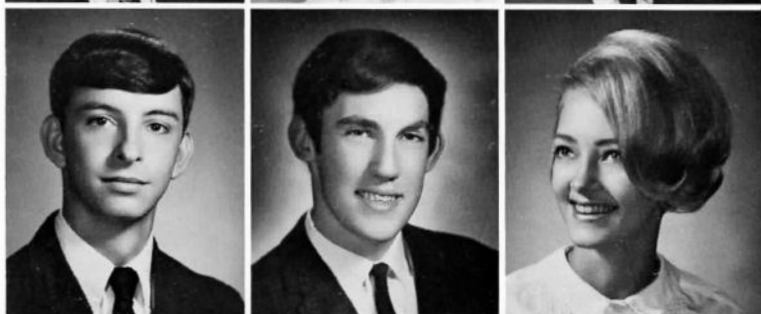
Tokens from Australia and Brazil Boomeranged



MICHAEL "MIKE" HENRY—Football '65, '66, '67; Biology Club '66; Science Club '67, '68; Track '67, '68; "J" Club '68.

PATRICIA HENRY—Future Teachers '66, '68; Future Homemakers '66, '67, '68; Future Business Leaders '67; Student Council '68; Monthly Tatler Business Staff '68.

GEORGE HICKERSON



DAVID HILL—Biology Club '66; Regional Math Contest '67; Future Business Leaders '67, '68; Junior Red Cross '67, '68.

GARY HODGSON—American Field Service Exchange Student from Geelong, Australia; Football '67; National Honor Society '68; Mu Alpha Theta '68; French Club '68; Science Club President '68; Track '68; Golf '68; Baseball '68.

DENITA HOLLIS—Junior Red Cross '66, '68; Monthly Tatler Business Staff '67; Future Business Leaders '67, '68; Future Teachers '68; Future Homemakers '68.



PATRICIA HONEN—Future Homemakers '66; Library Club '68.

STEPHEN HOPPER—Distributive Education Club '67.

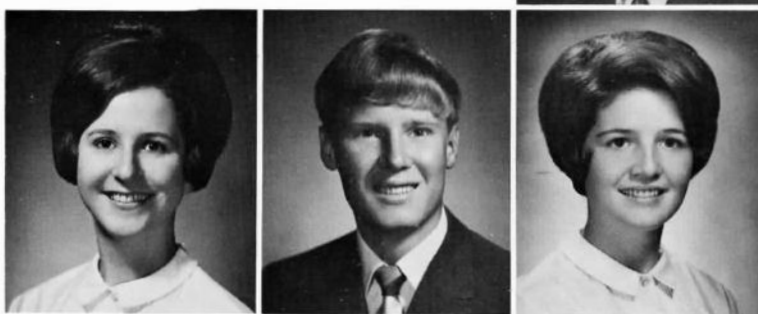


GENE HOUSE—Trades and Industries Club '67; Monthly Tatler Business Staff '68.

TERRY HOUSE—Junior Red Cross '66, '67, '68; Future Business Leaders '66, '67, '68; Future Homemakers '67, '68.

CHARLES HOWSE—Future Business Leaders '68.

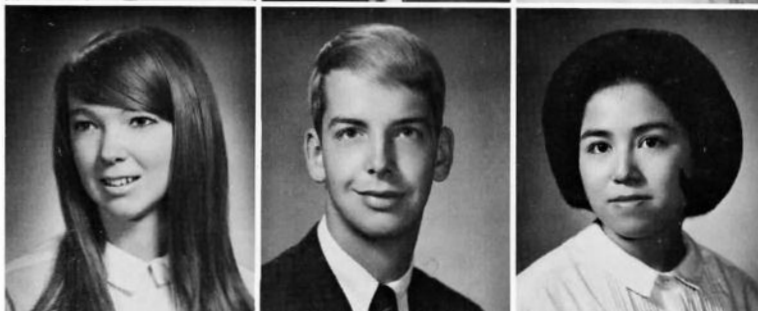
BONITA IRVIN—Spanish Club '66, '67, '68; Thespian Society '68; Monthly Tatler Literary Staff '68.



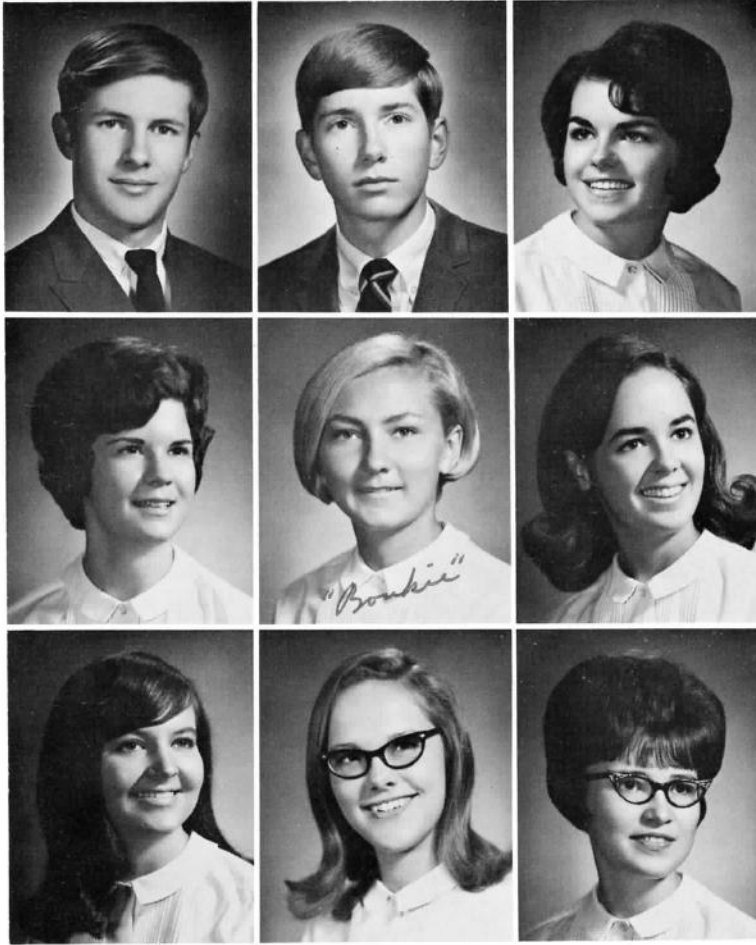
DONNA JACK—Transferred from Lake of Two Mountains High School, Montreal, Canada, '67.

DAVID JACKSON—Junior Red Cross '66, '67, '68; Future Business Leaders '67, '68.

PAULA JOE—Junior Red Cross '66; Biology Club '66; Future Homemakers '67; Future Business Leaders '67; Future Teachers '68; Annual Tatler Business Staff '68.



From Our American Field Service Exchangers



FRED JOHNSEY—Biology Club '66; Track '66, '67, '68; Junior Red Cross '67, '68; Future Business Leaders '68; "J" Club '68; Monthly Tatler Business Staff '68.

JAMES "JIMMY" JOHNSON—Biology Club '66; Band '66, '67; Junior Red Cross '66, '67, '68; Monthly Tatler Business Staff '67; Future Business Leaders '67.

JENNIFER JOHNSON—Spanish Club '66, '67; Future Homemakers '67; Future Teachers '67, '68; Future Business Leaders '68.

SHELIA JOHNSON—Library Club '66, '67; Future Business Leaders '66, '67, '68; Junior Red Cross '66, '68; Future Homemakers '68; Annual Tatler Business Staff '68.

JENNIFER "BOUKIE" JONES—Spanish Club '66, '67; Student Council '66, '67; Future Teachers '67, '68; Future Business Leaders '67, '68.

KAREN JONES—Latin Club '66; Junior Red Cross '66; Football Cheerleader '66, '67; Basketball '66, '67, '68; French Club '67, '68; Science Club '68.

VICKI JONES—Transferred from Jonesboro High School, Jonesboro, Arkansas '66; Future Business Leaders '68.

KATHY KELLIM—Junior Red Cross '66; Future Business Leaders '66, '68; Band '66, '67, '68; Future Homemakers '67; Stage Band '67, '68.

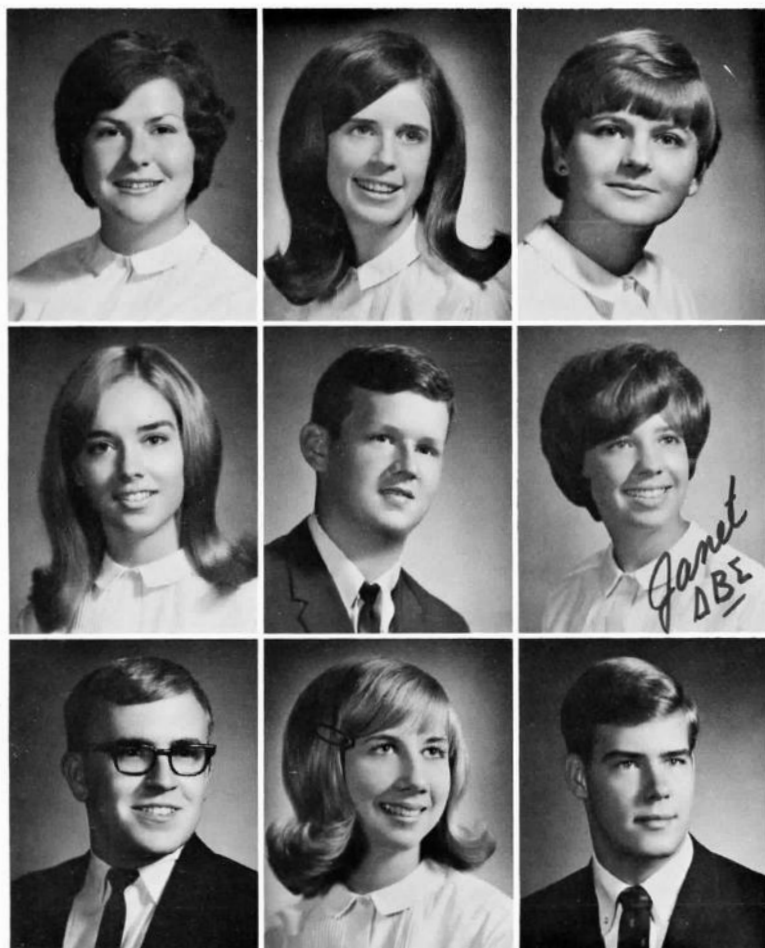
BRENDA KING—Future Homemakers '66, '68; Library Club '67, '68.

"YOU SEE, it's all in the wrist," AFS exchange student from Geelong, Australia, Gary Hodgson explained to Susan Scott and Robert Nelson, his American "little brother." Susan spent

last summer as an AFS exchange student to Brazil. Both Gary and Susan related the customs peculiar to Australia and to Brazil.



Citizenship and Homemaker Awards Earned



CAROLYN KUYKENDALL—Future Homemakers '66, '67; Distributive Education Club '67, '68; Library Club '68.

JOYCE "JOY" LAWRENCE—Junior Red Cross '66; Future Business Leaders '66, '67, '68; Future Homemakers '67, '68; Monthly Tatler Business Staff '68.

DOROTHY LAWSON—Spanish Club '66, '67, '68; Future Business Leaders '67; French Club '68; Future Teachers '68; Monthly Tatler Literary and Business Staffs '68; Annual Tatler Business Staff '68.

JEANETTE LEAVER—Basketball '66; Biology Club '66; Junior Red Cross '66; Future Homemakers '67; Future Business Leaders '67, '68; Monthly Tatler Literary Staff '68; Annual Tatler Business Staff '68.

BILLY JOE LEDBETTER—Biology Club '66; Future Business Leaders '68.

JANET LESLIE—Future Business Leaders '66, '67, '68; French Club '67; Future Homemakers '67, '68.

RICHARD LEWELLING—Track '66, '67; French Club '67; Future Business Leaders '68.

JUDY LEWIS—Transferred from Issac Litton High School, Nashville, Tennessee '67; Future Teachers '68.

PHILIP LEWIS—Junior Red Cross '66, '67; Trades and Industries Club '67, '68; Baseball '67, '68; "J" Club '67, '68.

DAUGHTERS OF THE AMERICAN REVOLUTION this year awarded Marcia Alexander with their Good Citizenship Medal. She easily met the qualifications of cooperation, dependability, patriotism, and service to her school and her community. Senior homerooms nominated candidates for this coveted award, but the final decision was made by the entire faculty.

BETTY CROCKER HOMEMAKER AWARD for 1968 was won by Melanie Counce. This contest, sponsored by General Mills, was open to all senior girls and a decision was made on the basis of a competitive examination of various home-making skills. Melanie's winning score enabled her to participate in the state contest.



By Marcia Alexander and Melanie Counce

MARTHA LYNN LOLLAR—Junior Red Cross '66; Biology Club '66; Future Homemakers '67; Spanish Club '67, '68; Future Teachers '68; Annual Tatler Business Staff '68.

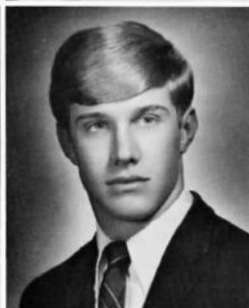
JUDY LONG—Basketball '66; Future Teachers '66; French Club '66; Future Homemakers '67; Future Business Leaders '67, '68.

JAMES "JIMMY" LOVE—Future Business Leaders '68.

BETTY LUCK—Biology Club '66; Latin Club '66; Basketball '66; Thespian Society '66, '67, '68; Spanish Club '67; Science Club '67; Future Homemakers '68; National Honor Society '68; Annual Tatler Business Staff '68.

PHILLIP LUNA—Biology Club '66; Junior Red Cross '66, '67; Future Business Leaders '67, '68; Baseball '67, '68; "J" Club '68.

WILLIAM "BILL" LYNCH—Track '66, '67, '68; Future Business Leaders '67, '68; Distributive Education Club '67, President '68.



DUKE MARTIN—Latin Club '66; Junior Red Cross '66; Projectionist Club '66; Science Club '66, '67; Student Council '67.

ANTHONY "TONY" MATHENEY—Track '66, '67, '68; Distributive Education Club '67, '68; "J" Club '68.



CHARLOTTE MATHIS—Transferred from East Noble High School, Kendallville, Indiana '66; Future Teachers '68.



BRADLEY "BRAD" MELTON—Baseball '66, '67; Trades and Industries Club '67; Junior Red Cross '68.

SUSAN MERIWETHER—Junior Red Cross '66; Basketball Manager '66, '67, '68; Mu Alpha Theta '67, '68; Future Teachers '68; Spanish Club '68.

ANN MIDDLETON—Future Homemakers '67, '68; Library Club '67, '68; Future Business Leaders '68; Annual Tatler Business Staff '68.



KATHRYN "KATHY" MILLER—Spanish Club '66, '67; Science Club '68; Future Homemakers '68.

DANNY MOLING—Future Business Leaders '67, '68.

DENNIS MOLNAR—Distributive Education Club '67, '68.

Problems of State and Local Governments

KAY MONTGOMERY—Spanish Club '66; Regional Math Contest '66; Future Homemakers '67; National Honor Society '68; Mu Alpha Theta '68; Future Teachers '68; Monthly Tatler Literary Staff '68.

HAROLD MOODY—Trades and Industries Club '67, President '68.

JUDITH "JUDY" MOODY—Future Homemakers '66, '68; Distributive Education Club '67, '68; Library Club President '68.



FRANKLIN "FRANKIE" MOSELEY—Transferred from McMinnville City High School, McMinnville, Tennessee '67; Future Business Leaders '68.

ANN MULLIS—Future Homemakers '67; French Club '68; National Honor Society '68; Mu Alpha Theta '68.

RONALD MURPHY—Trades and Industries Club '67, '68.



MOLLY McCAGHREN—Student Council '66; Junior Red Cross '66; Spanish Club '67; Future Homemakers '67, '68; Future Business Leaders '67, '68.

DEBORAH McCARTY—Junior Red Cross '66; Future Homemakers '67, '68; Future Business Leaders '67, '68; Student Council '68.

JOHNNY "JOHN" McCOY—Biology Club '66; Junior Red Cross '67; Future Business Leaders '68.



FUNDAMENTALS OF state government were impressed upon Boys' and Girls' State delegates Mike Singleton, Susan Scott, Stan Harris, Libba Birmingham, and Bruce Brown. The

boys journeyed to the campus of Tennessee Tech at Cookeville for their week-long democratic endeavor, while the girls set up a model legislature at Middle Tennessee State University.



Taxed Boys' and Girls' State Delegates



JERRY MCGOUGH—Junior Red Cross '66; Biology Club '66; Trades and Industries Club '67; Future Business Leaders '67, '68.

PATRICIA "PAT" McMANUS—Spanish Club '67; Future Homemakers '68; French Club '68; Basketball '68; Future Teachers '68.

DONNA NORTHCOTT—Junior Red Cross '66; Biology Club '66; Band '66, '67, '68; Future Homemakers '67, '68; Future Business Leaders '68.



DAVID OLIVER—Future Business Leaders '67; Cub Lion '68.

BLAKEMORE "BLAKE" OVERALL—Biology Club '66; Spanish Club '67.

JAMES PARKER—Future Business Leaders '66, '67; Monthly Tatler Business Staff '67.



GEORGE PARR—Spanish Club '66, '67.

GREGORY "GREG" PASCAL—Biology Club '66; French Club '67; Mu Alpha Theta '67, '68; Science Club '67, '68; National Honor Society '68; Cub Lion '68.

CHARLES PEARSON—Biology Club '66; Future Business Leaders '66, '67; National Honor Society '68.



RAINEY PEGRAM—Future Business Leaders '67, '68; Monthly Tatler Business Staff '67, '68.

DIANE PERKINS—Biology Club '66; Junior Red Cross '66; Future Business Leaders '66, '67; Future Homemakers '67.

JAMES "JIMMY" PHILLIPS—Latin Club '66, '67; French Club '67; Mu Alpha Theta '67, '68; Annual Tatler Literary Staff '67, '68; Monthly Tatler Literary Staff '68.



CHARLES PIERCEY—Distributive Education Club '67, '68.

MICHAEL "MIKE" POLLARD—Golf '67; French Club '67; Mu Alpha Theta '67; Science Club '68; "J" Club '68.

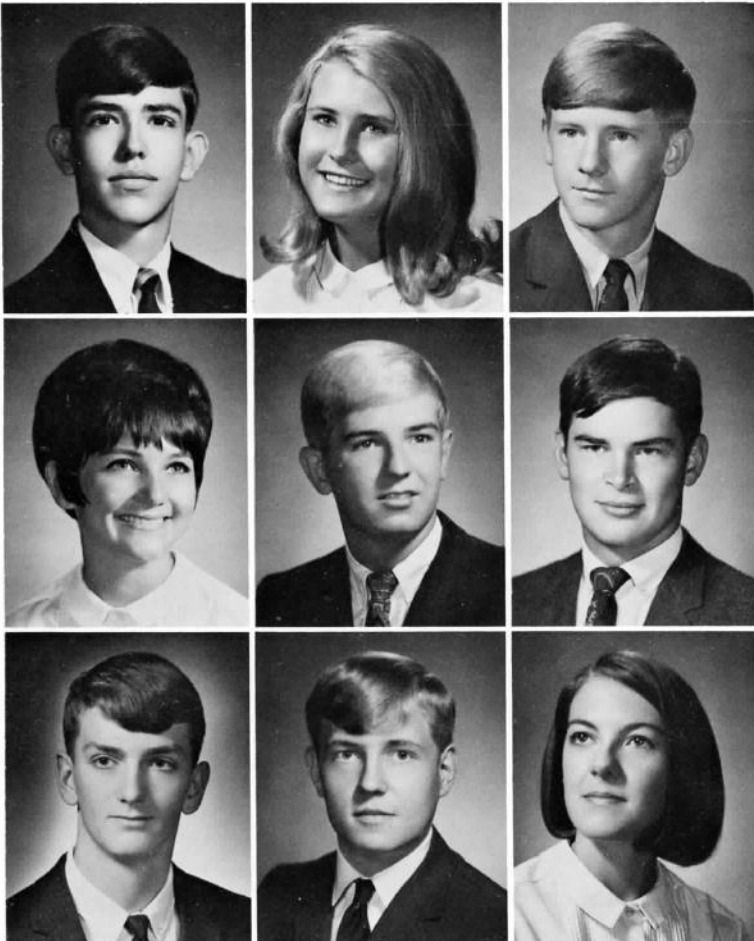
JEAN POUNDS—Biology Club '66; Basketball '66, '67, '68; Junior Red Cross '66, '68; Future Homemakers '67; Student Council '67; Future Business Leaders '68.



Fellowship With Jackson Businessmen



CUB LIONS David Oliver, Dennis Read, Stan Harris, James Campbell, Mike Crowell, Drew Brewer, Greg Pascal, and Danny Breen each met for one month with the Jackson LIONS CLUB. These meetings gave the boys a chance to show off their Sunday ties and enjoy fellowship with Jackson Businessmen.



JOE POWELL—Band '66, '67, '68; Science Club '67, '68.

PAMELA "PAM" PREISSIG—Student Council '66; Biology Club '66; Spanish Club '66; Basketball '66, '67, '68; National Honor Society '67, '68; Science Club '67, '68; Mu Alpha Theta '67, '68; Monthly Tatler Literary Staff '67, '68; Basketball Homecoming Queen '68.

RODNEY PUCKETT—Biology Club '66.

MARTHA RAGAN—Junior Red Cross '66; French Club '66, '67; Future Teachers '67; Future Business Leaders '67, President '68; Annual Tatler Literary Staff '68.

CRAIG RALLS—Biology Club '66; Junior Red Cross '66; Spanish Club '67; Mu Alpha Theta '68; Science Club '68.

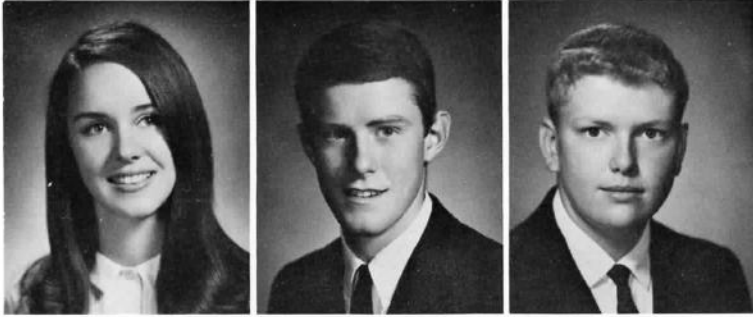
MICHAEL RANDOLPH—Football '65, '66; Latin Club '66; Biology Club '66; Regional Science Fair '66; Annual Tatler Literary Staff '66, '67, Co-Editor '68; Junior Rotarian '67; Monthly Tatler Literary Staff '67, '68; National Honor Society '67, '68; Science Club '67, '68; Mu Alpha Theta '68.

DENNIS READ—Latin Club '66; French Club '67; Mu Alpha Theta '67, '68; Science Club '67, '68; Cub Lion '68.

EDWARD REID—Football '65; Future Business Leaders '67; Monthly Tatler Business Staff '67.

SUSAN RICE—Junior Red Cross '66; French Club '66, '67; Mu Alpha Theta '67; Future Business Leaders '68; National Honor Society '68; Spanish Club '68.

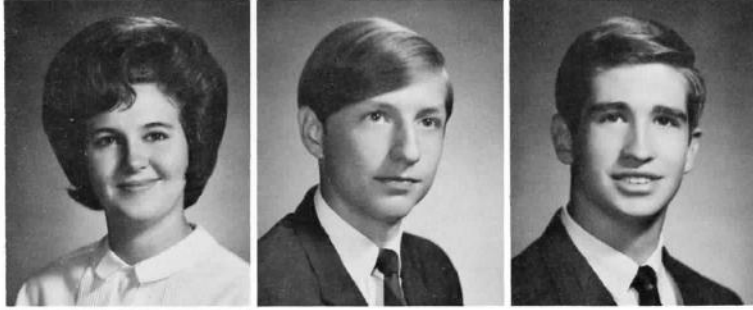
Was Enjoyed By Eight Senior Lions



VIVIAN "SUZIE" RICHARDSON—Transferred from Portageville High School, Portageville, Missouri '67; Science Club '67; Spanish Club '68; Future Business Leaders '68.

WILLIAM "BILL" RICHARDSON—Junior Red Cross '66; Biology Club '66; Latin Club '66, '67; Basketball '66, '67, '68; Track '66, '67, '68; Spanish Club '67; "J" Club '67, '68; National Honor Society '68.

JOHN "JOHNNY" ROBINSON—Biology Club '66; Band '66, '67, '68; Monthly Tatler Business Staff '68; Stage Band '68; Annual Tatler Literary Staff '68.



GLORIA ROGERS—Future Homemakers '66, '67; Distributive Education Club '67, '68; Future Business Leaders '68.

ROBERT "BOBBY" ROGERS—Future Business Leaders '68.

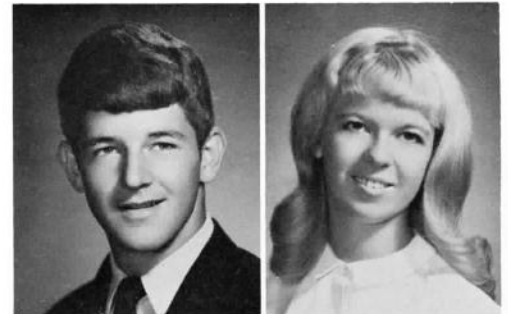
WILLIAM "BILL" ROGERS—Football '65, '66, '67; "J" Club '68; Future Business Leaders '68.



KATHY ROLAND—Biology Club President '66; Junior Red Cross '66; French Club '67; Spanish Club '67; Football Royalty '67; National Honor Society '67, '68; Annual Tatler Business Staff '68; Monthly Tatler Business Staff '68; Mu Alpha Theta '68; Science Club '68.

STEPHEN "STEVE" ROSE—Football '65, '66, '67; Basketball '66; Baseball '67, '68; Track '67, '68; "J" Club '67, '68; Future Business Leaders '67, '68.

LINDA ROSS—Future Homemakers '67; Distributive Education Club '67, '68; Library Club '67, '68; Future Business Leaders '67, '68.



ANNE RUSSELL—Future Homemakers '66, '67; Future Business Leaders '67, '68.

DEBORAH "DEBBIE" RUSSELL—Biology Club '66; Future Teachers '66, '67, '68; Basketball '66, '67, '68; Mu Alpha Theta '67; Latin Club '67; Monthly Tatler Literary Staff '67, '68; French Club '68; National Honor Society '68.

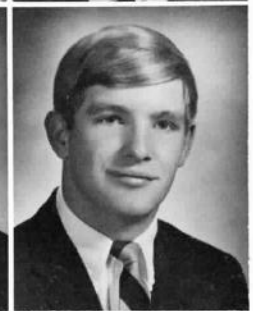
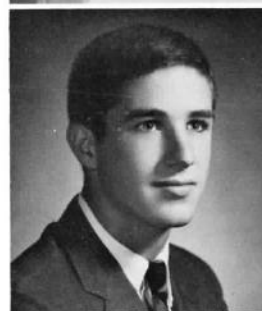


LLOYD RUSSELL—Biology Club '66; Junior Red Cross '66; Future Business Leaders '67, '68.

THOMAS "TOMMY" RUSSELL—Student Council '66; Junior Red Cross '66, '67; Basketball '66, '67, '68; Track '66, '67, '68; Latin Club '67; Delegate to Camp Miniwanca '67; "J" Club '67, '68; National Honor Society '68; Student Body Vice-President '68.

STANTON "STAN" SARGENT—Transferred from Blytheville Senior High School, Blytheville, Arkansas '68.

BEN "BENNY" SEWARD—Football '65, '66, '67; Junior Red Cross '66; "J" Club '67, '68; Future Business Leaders '67, '68; Baseball '68.



Notices of Acceptances From Favorite Colleges

KATHRYN "KATHY" SHELTON—Junior Red Cross '66; Library Club '66; French Club '66, '67; Monthly Tatler Literary Staff '66, '67, '68; Future Homemakers '67; Murray State Journalism Clinic '67; National Honor Society '67, '68; Future Teachers '68.

MARY ELIZABETH "SISSY" SHUTE—Biology Club '66; Junior Red Cross '66, '67, '68; Football Homecoming Queen '67; Spanish Club '67, '68; Future Business Leaders '67, '68; Monthly Tatler Business Staff '68; Basketball Cheerleader '68.

MICHAEL "MIKE" SINGLETON—Transferred from Jonesboro High School, Jonesboro, Arkansas '66; Football '66, '67; Delegate to Boys' State '67; Track '67, '68; "J" Club '67, '68; Latin Club '67, President '68.

REDONNA "DONNA" SMITH—Future Homemakers '66; Library Club '67; Future Business Leaders '67, '68.

KATHLYN "LYN" SNIPES—Latin Club '66; Future Homemakers '67; French Club '67, '68; National Thespian Society '67, '68.

BELINDA SPAIN—Future Homemakers '66; Mu Alpha Theta '67, '68; French Club '67, '68; National Honor Society '68.



DALE SPAIN—Football '65, '66, '67; Biology Club '66; Basketball '66, '67, '68; Baseball '66, '67, '68; "J" Club '66, '67, '68; Spanish Club '67; Science Club '67; Track '67, '68; Future Business Leaders '68.

CAROL SPANN—Science Club '67; National Thespian Society '67, '68; Mu Alpha Theta '67, '68; National Honor Society '68.

MICHAEL "MIKE" SPITZER—Biology Club '66; Basketball Manager '66, '67, '68; Future Business Leaders '67, '68; "J" Club '68.



ARTHUR "BUTCH" STANFILL—Biology Club '66; Junior Red Cross '66; Spanish Club '66; Band '66; Future Business Leaders '66, '67, '68.

ROGERS STEED—Junior Red Cross '66; Biology Club '66; Spanish Club '66, '67; Band '66, '67; Science Club '67, '68; Track '67, '68; Mu Alpha Theta '68.

KAREN STEGALL—Junior Red Cross '66; Future Homemakers '67; Future Business Leaders '67, '68; Basketball Cheerleader '68.

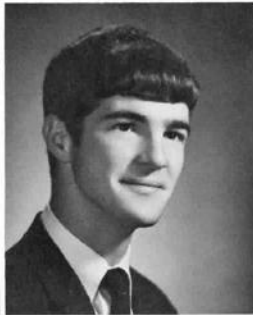
ROY "STEVE" STEPHENSON—Junior Red Cross '66; Future Business Leaders '66, '67.

LINDA STEWART—Future Business Leaders '67; Future Homemakers '67; Library Club '67, '68; Future Teachers '68.

MICHAEL "MIKE" STEWART—Transferred from Dothan High School, Dothan, Alabama '68; Band '68.



Tipped Balance of Scales For Many Future Plans



ASA STONE—Golf '67; Junior Rotarian '67; Track '67, '68; "J" Club '68.

HELEN SULLIVAN—Biology Club '66; Spanish Club '66, '67; Future Teachers '67, '68; Science Club '68; Annual Tatler Business Staff '67, '68.

MILLARD SUMMARELL—Football '65, '66, '67; Biology Club President '66; Junior Red Cross '66; "J" Club '67, '68; Future Business Leaders '67, '68.



PATRICIA "PATSY" TEAGUE—Junior Red Cross '66; Future Homemakers '67; Spanish Club '67, '68.

MICHAEL "MIKE" TURNER—Future Business Leaders '68.

PHILLIP TURNER—Future Business Leaders '66, '67, '68; Band '66, '67, '68; Annual Tatler Business Staff '67, '68; Mu Alpha Theta '68; Monthly Tatler Literary Staff '68.



STEPHENSON "STEVE" TURNER—Transferred from Virginia High School, Bristol, Virginia '68; Mu Alpha Theta '68; Science Club '68.

SHELIAH TYRA—Transferred from Phillips High School, Birmingham, Alabama '67; Annual Tatler Business Staff '68; Future Homemakers '68; Future Business Leaders '68.

Stone



COLLEGE BOUND SENIORS sought advice from our guidance counselor, Miss Frances Crosson, in selecting the ideal school. Size, distance from home, expense, and courses offered were the main considerations of Terry Fleming and Dave Giffen.

More Than Two Hundred Seniors Proudly Donned

DORIS VARNELL—Future Homemakers '66; Future Teachers '66, '67, '68; Spanish Club '67.

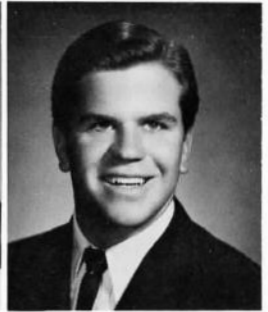
FREDDY VINSON—Basketball '66, '67, '68; Track '67, '68; Future Business Leaders '68.

JO ANN WALKER—Library Club '66, '67, '68.

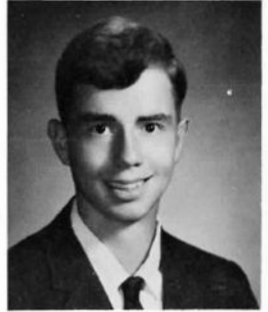
LUCINDA "CINDY" WALKER—French Club '66; Junior Red Cross '66; Future Business Leaders '66, '67, '68; Future Teachers '67, '68; Future Homemakers '68.

BETH WARNER—Junior Red Cross '66; French Club '66, '67; Science Club '67; Future Homemakers '67; Monthly Tatler Literary Staff '67, '68; Mu Alpha Theta '68; Annual Tatler Literary Staff '68; Future Teachers '68.

DONALD WEIR—Transferred from Huntingdon Beach High School, Huntingdon Beach, California '68.



STANLEY WELCH—Track '66, '67, '68; Future Business Leaders '68; Monthly Tatler Business Staff '68.



STEVENS "STEVE" WEST—Future Business Leaders '68.

LARRY WHEAT—Biology Club '66; Junior Red Cross '66; Lufkin High School, Lufkin, Texas '67.



BARBARA WHITE—Junior Red Cross '66; Basketball '66, '67, '68; French Club '67; Future Teachers '67, '68; Mu Alpha Theta '67, '68; National Honor Society '68; Monthly Tatler Literary Staff '68.

DEBORAH "DEBBIE" WHITE—Future Homemakers '66, '67; Library Club '66, '67; Future Business Leaders '67, '68; Monthly Tatler Business Staff '68.

REBECCA "BECKY" WHITE—Junior Red Cross '66; Biology Club '66; Future Teachers '66, '67, '68; Library Club '67; Mu Alpha Theta '67, '68; Annual Tatler Literary Staff '68.



MARIE WIGGINS—Junior Red Cross '66; Future Homemakers '66; Future Business Leaders '68; Monthly Tatler Business Staff '68.

RAYMOND "RAY" WIGGINS—Junior Red Cross '66; Biology Club '66; Future Business Leaders '67, '68.

JOHN WILLIAMS—Biology Club '66; Spanish Club '67; National Honor Society '67, '68; Science Club '68; Mu Alpha Theta '68; Annual Tatler Business Staff '67, Manager '68.

Caps and Gowns and Received Coveted Diplomas



SUSAN WILLIAMS—Junior Red Cross '66; Spanish Club '67; Future Homemakers '68; Future Business Leaders '68.

JOHN WIMBERLY—Biology Club '66; Track '66, '67, '68.

CAROL WYATT—French Club '66; Future Homemakers '67, '68; Monthly Tatler Business Staff '68; Annual Tatler Business Staff '68.

RICHARD "RICKY" YANDELL—Basketball '66, '67, '68; Track '66, '67, '68; "J" Club '68.

RUDY YOUNG—Junior Red Cross '66; Biology Club '66; Future Business Leaders '67, '68; Student Council '68.

LESLIE ZARICOR—Future Business Leaders '66; Distributive Education Club '67, '68.

*Tyrone
Leslie
Z.*

OVER 250 STUDENTS acted as hosts and hostesses, ushered, sold programs, and worked in the concession stands at the Jackson Coliseum during the Girls' State Tournament held in the spring. Coach Hicks estimated that the volunteers peddled 5,000 hot dogs, 15,000 bags of popcorn, and 25,000 cokes to the more than 24,000 basketball addicts. Seniors Bill

Rogers and Bobby Blow sold just one more hot dog to Spectator Mr. Billy McIllwain as Hawkers James Parker and Fred Johnsey came back for refills. Seniors enjoyed shortened schedules and gladly skipped classes to insure the success of the tournament.



Juniors



*entangled by a web of both
anxiety and hesitation . . .
not sure of the next step, and yet,
not actually unsure . . .*



*blessed with the
realization that every
decision is a
landmark.*

Juniors Tackled Numerous



CONTINUING TO lead their class as Junior class officers were President Steve Smith, Vice-President Cissie Caldwell, Secretary Harriet Emison and Treasurer Janey Fesmire.

IN ORDER to stimulate an active interest in community affairs, Jackson High students Jimmy Hoppers, Keith Hall, Eddie Richardson, Kyle Carpenter, Milton Cravens, Mairs Baxter, Steve Farrow, Eddie Krei, and Wendell Maness were selected to attend the weekly Rotary Club meetings as Junior Rotarians.

Juniors, caught between self-assured seniors and wide-eyed sophomores, strived to create their own particular spot in the school society. Under the sponsorship of Mrs. Clyde Freeman, the jolly juniors accepted all challenges presented.

Outstanding juniors with an average of 90 or above were given membership in the National Honor Society and Mu Alpha Theta, honorary math society. Various other juniors, thinking about the future, took the PSAT and National Merit Scholarship Qualifying Test to examine their qualifications for entrance to the college of their choice. Jackson High's guidance counselor, Mrs.

Frances Crosson, provided the students with representatives from various colleges. The election of juniors near the end of the school year to Student Council offices as well as senior offices added to the responsibility of those elected and to those who voted.

The Junior Class treasury was also expanded this year with the addition of hard earned money. Early in the year, juniors sold 1968 calendars and the annual Bear Brother's Carnival provided money as well as the incentive to compete with other classes for the grand prize.



First Row:
Joyce Alderson
Chuck Allen
David Allen
Rex Arendall

Second Row:
Ben Baker
Judy Baker
Connie Ballard
Susan Banks

Challenges

First Row:

Judy Barefoot
Faye Barger
Kris Barnes
Billy Barnett
Janet Barnett
Mike Barry



Second Row:

Jerry Baughn
Mairs Baxter
Danny Beard
Barbara Beasley
Susan Beasley
Bobby Bell



Third Row:

Connie Bell
Libby Bell
Carol Benson
Betsy Black
Roy Blackwell
Hugh Bomar



Fourth Row:

Mona Boren
Tracy Boyer
Jimmy Brewer
Jimmie Lynn Brewer
Barbara Bridger
Mary Bridger



Fifth Row:

Donna Brock
Patricia Brooks
Kenny Brown
Bill Bullock
Lee Burger
Betty Butler



Sixth Row:

Cissie Caldwell
Linda Callahan
Don Carloss
Mike Carmichael
Kyle Carpenter
Pam Childress



First Row:

Debbie Chism
Sonny Chumney
Bobby Clampitt
Andy Clarke
Jim Clement
Joe Clements

Second Row:

Linda Cole
Wallace Coppedge
Brenda Corley
Charles Cottrell
Diane Coughlin
Milton Cravens

Third Row:

Beth Crocker
Anneita Cunningham
Rhea Dabney
Judy Dailey
Bonita Davis
Brent Davis

Fourth Row:

Todd Davis
Donna Day
Dennis Deaton
Danny Deloach
Claudette Dias
Jimmy Dickey

Junior



First Row:

Janet Doss
David Douglass
Yvonne Douglass
Debbie Drake
Susan Driver
Si Edwards

Second Row:

Kent Elrod
Harriet Emison
Steve Farrow
Janey Fesmire
Kenneth Fielding
Suzannah Finley

Third Row:

Shirley Fisher
Danny Fondren
Louise Forde
Kenny Fullington
Carol Gaffney
Lee Garland

Fourth Row:

Jerry Gay
Joel Gibson
Nancy Gilbert
Pat Gilbert
Rusty Gilbert
Brad Gillmore

Fifth Row:

Dickey Glisson
David Glover
Pam Golden
Jerry Gordon
Gordon Grace
Jimmy Griffin

First Row:

Keith Hall
Howard Hamilton
Brenda Hammonds
Paul Hampson
Lynn Harrison
Paul Hartz

Second Row:

Debbie Havner
Bennie Hayes
Lynda Helms
Bobby Henderson
Gary Henson
Andy Hight

Third Row:

Susan Hilliard
Joe Holloway
Wayne Holmes
Janice Holt
Freida Honen
Betty Hopper

Fourth Row:

Jimmy Hoppers
Carolyn House
Alan Hudson
Dan Huffstutter
Bill Illing
David James

Fifth Row:

Linda James
Camille Jimerson
Pat Johnsey
Jeff Johnson
Susan Jones
Tamara Karaba



Scholars

First Row:

Eddie Krei
Leslie Kruger
Russ Langdon
Chris Lassiter
Bo Lawrence
Swan Lawrence



Second Row:

Johnny Ledbetter
Randy Lewis
Gary Long
Phillip Lovett
Jon Lummus
Wendell Maness



Third Row:

Johnny Marshall
Janey Marston
Ron Masters
Johnny Matthews
Margie Mays
Diane Measells



Fourth Row:

Mary Ann Medlin
Tim Medlin
Annette Menzies
Morris Meriweather
Mary Jo Middlebrooks
Pam Miller



Fifth Row:

Sammy Mingledorff
Greg Montgomery
Mary Elizabeth Morgan
Dow Mullins
Judy Mullins
Rhonda Mullins



First Row:

Danny Murphy
David McAlexander
Ann McBride
James McCartney
Denise McCarty
Kathy McConnell



Second Row:

Pat McCord
Dana McCorkle
Eleanor McCutcheon
Mike McElroy
Belinda McEwen
Larry McGee



Third Row:

Kenny McGough
Harriet McHughes
Cathy McIver
Sid McMillan
Terry McNatt
Janie Nelson



Fourth Row:

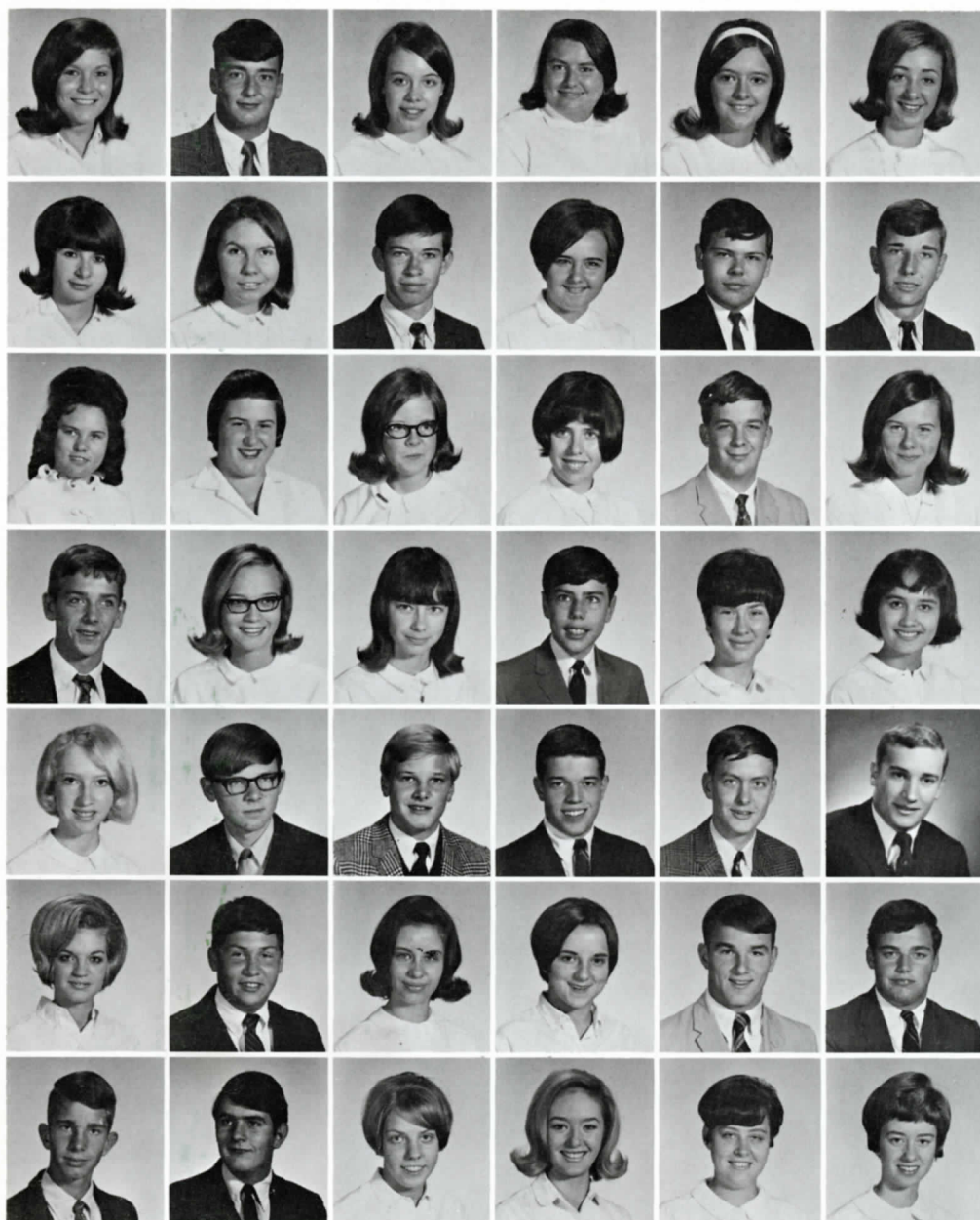
Robert Nelson
Pat Newbill
Norma Newton
Dana Nielsen
Donna O'dell
Nelda Paratore



Fifth Row:

Earline Parker
Lynn Parker
Mike Pevahouse
Peter Phillips
Susan Pounds
John Powell

Mission:



First Row:

Judy Prescott
 Steve Presson
 Nancy Priddy
 Becky Qualls
 Donna Raines
 Mary Jo Reams

Second Row:

Susan Reck
 Charlotte Redding
 Donnie Replogle
 Julia Reves
 Donnie Rhodes
 Eddie Richardson

Third Row:

Elizabeth Richie
 Elaine Richman
 Libboo Riddler
 Peggy Rinehart
 Tommy Rogers
 Teresa Roe

Fourth Row:

Donnie Rose
 Lin Rose
 Jean Ross
 Jim Rubino
 Linda Rukavina
 Pat Sanson

Fifth Row:

Becky Scott
 Randy Scott
 Charles Sevier
 Ronnie Shuffield
 Steve Simms
 Steve Simpson

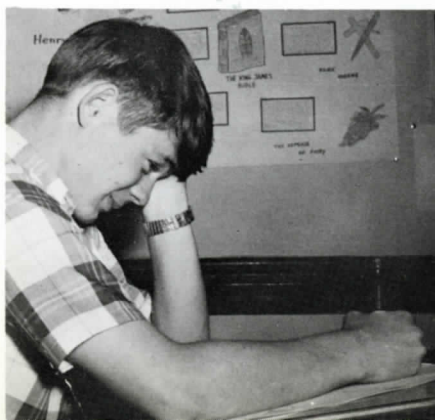
Sixth Row:

Marjorie Sinks
 John Smith
 Kathie Smith
 Shirley Smith
 Steve Smith
 Sid Spain

Seventh Row:

Greg Spann
 Robert Spragins
 Emily Steed
 Carol Stevenson
 Reba Stewart
 Annette Stout

ENGLISH TEST perplexed Mike Barry FORMULAS PUZZLED Linda Wilson PATRICIA BROOKS stitched hurriedly



To Work

First Row:

Betty Tate
James Taylor
Marylin Taylor
Danny Thomas
Jimmy Thomas
Dale Thomason



Second Row:

Pam Thompson
Bobby Tulley
Linda Turnbo
Steve Vantrese
Mike Vinson
Susan Vinson



Third Row:

Cindy Voegeli
Gary Wadley
Debbie Walker
Harold Walker
Jill Walker
Monnie Waller



Fourth Row:

Rob Watlington
Shirley Watson
Sam Watts
Elizabeth Webb
Patricia Weir
Ted Welch



Fifth Row:

Mike Wells
Jim Wernimont
Raymond Whetstone
Jonnie Williams
Ernest Williamson
Billy Williamson



Sixth Row:

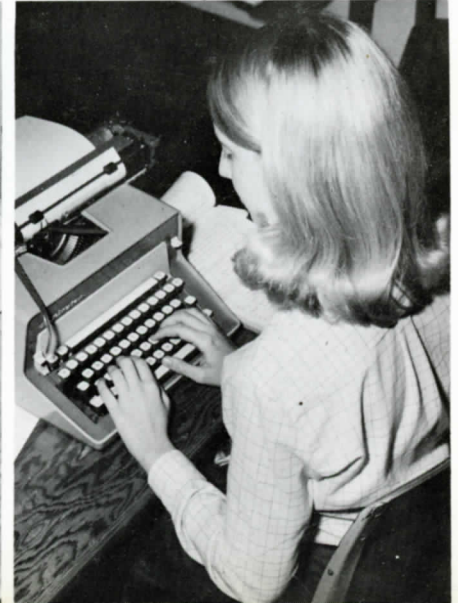
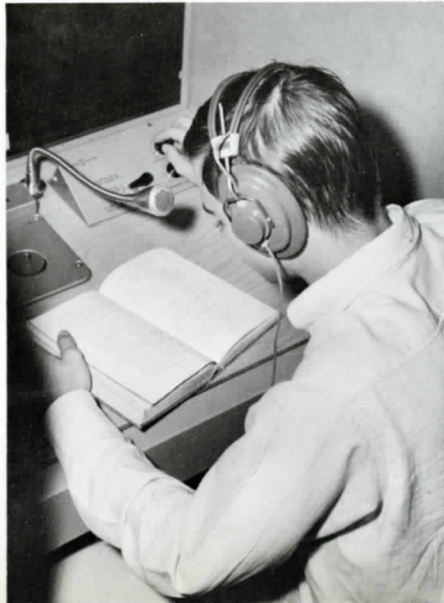
Linda Wilson
Patti Wilson
Ardis Wyatt
Tommy Wyatt
Miki York
Mike Youngblood



KENNY MCGOUGH searched desperately

TOMMY WYATT listened intently

CAMILLE JIMERSON drilled diligently



Sophomores



*eagerness, anticipation . . .
memories of a younger world
are pushed behind,
and a new world is entered . . .*



*a world in which
little things count
a great deal . . .*



Newcomers Valued Experiences

Stepping up to bigger and better things, three hundred and nine sophomores joined the ranks of the Jackson High School student body. The first few days were confusing for all, but the tenth graders soon found their way through the halls as efficiently as the more knowledgeable juniors and seniors.

Election week, in which posters and signs covered the walls of the school, was one of the busiest of the year. After hearing the campaign speeches of the candidates, the sophomores elected the people that led them through their first year at Jackson High School.

Another exciting time was the week of football homecoming. Although the sophomores put forth a valiant effort, they came in last in the competition. With a great comeback on the last day of the week, the sophomores finished only three points behind the second-place class.

The newest students who inhabited these hallowed halls were kept busy taking tests. Those that wished to had the opportunity of taking the National Educational Development test and all sophomores participated in the Differential Aptitude Test. These tests are designed to help all students in choosing a course of study for the years to come.

The valuable experience gained by the sophomores this year prepared them for the opportunity of contributing more to JHS during their junior and senior years.

UNCERTAINTY CHANGED to confidence as the sophomores progressed through their first year at Jackson High. With the leadership of officers: Secretary Debby Little, Vice-president Emily Webb, President Chris Harris, and Treasurer Kathy Mitchell, the newcomers advanced in their constant battle to keep up with the juniors and seniors.

First Row:

Kathy Adams
Pam Alexander
Patsy Alexander
Bill Aston
Mary Elizabeth Austin



Second Row:

Timmy Austin
Charles Avery
Joan Bailey
Cay Baker
Jane Barber
Judy Barber



Third Row:

Dot Barger
David Barnes
Jack Barnett
John Barnett
Kenny Barr
Joe Benanti



Fourth Row:

Jerry Berryman
Bonnie Bivens
David Blackwell
Murray Boone
Clyde Boren
Cindy Bray



Fifth Row:

Judy Bray
Jim Brewer
Judy Brewster
Linda Britt
Randall Britt
Judy Broadstreet



At J.H.S.

First Row:

Carolyn Brown
Phil Browning
Mike Butler
Jesse Bynum
Kay Callahan
Charles Campbell



Second Row:

Phyllis Carter
Jan Caylor
Patricia Chandler
Melinda Cheatham
Carlos Childers
Barry Clampett



Third Row:

Jimbo Clemmons
Carol Cobb
David Cochran
Jeff Cole
Greg Coleman
Marty Coleraine



Fourth Row:

Gerry Cooper
Leon Cottner
Billy Ray Cox
Carolyn Cox
Hal Crocker
Curt Crowley



Fifth Row:

Kay Cullen
Sylvia Cullins
Diane Davis
Nancy Davis
Tommy Day
Andy Dearth



Sixth Row:

Richard DeBerry
Jane Dickens
Buddy Dickey
Lee Dickey
Linda Dickson
Vann Dodson



Seventh Row:

Richard Douglass
Sandra Douglass
Tony Duke
Gary Dye
Doug Easley
Sandra Eaves



Eighth Row:

Bruce Edenton
Marilyn Estes
Lynn Etheridge
Mike Fann
Buster Ferguson
Johnny Fitzgerald



Ninth Row:

Mary Ann Flowers
Ian Forestier
Robert Forgy
Lawrence Forrester
Larry Forsythe
Marvin Forsythe



Tenth Row:

Sara Foster
Jolyn Frazier
Ronnie Frederick
Nancy Frick
David Gaba
Mike Gable

Mini-Skirted

First Row:

Kay Gardner
Nancy Gascoigne
Steve Gilbert
Troy Giles
Mike Glynn
David Goldstein

Second Row:

Martha Goodrum
Bob Goodson
George Gooze
Andy Gowan
Ruth Graves
Kathy Greenway

Third Row:

Lee Gregory
Jerry Grissom
Suzette Haygood
Leslie Hale
Steve Halfacre
Judy Hall

Fourth Row:

Linda Hall
David Hamlett
Jerry Hammond
Carolyn Harris
Chris Harris
Dorothy Harrison

Fifth Row:

Jeff Harrison
Diane Hickman
Jay Hight
Fanny Sue Hill
David Hodge
Steve Hodge

Sixth Row:

Jimmy Honen
Roger Hoover
Brenda Horn
Steve Horn
Clarence Howard
Glenda Howard

Seventh Row:

Cissy Hudson
Bill Hulsey
Sandra Hunt
Wayne Hunt
Ronnie Hurley
Ginny Ingham

Eighth Row:

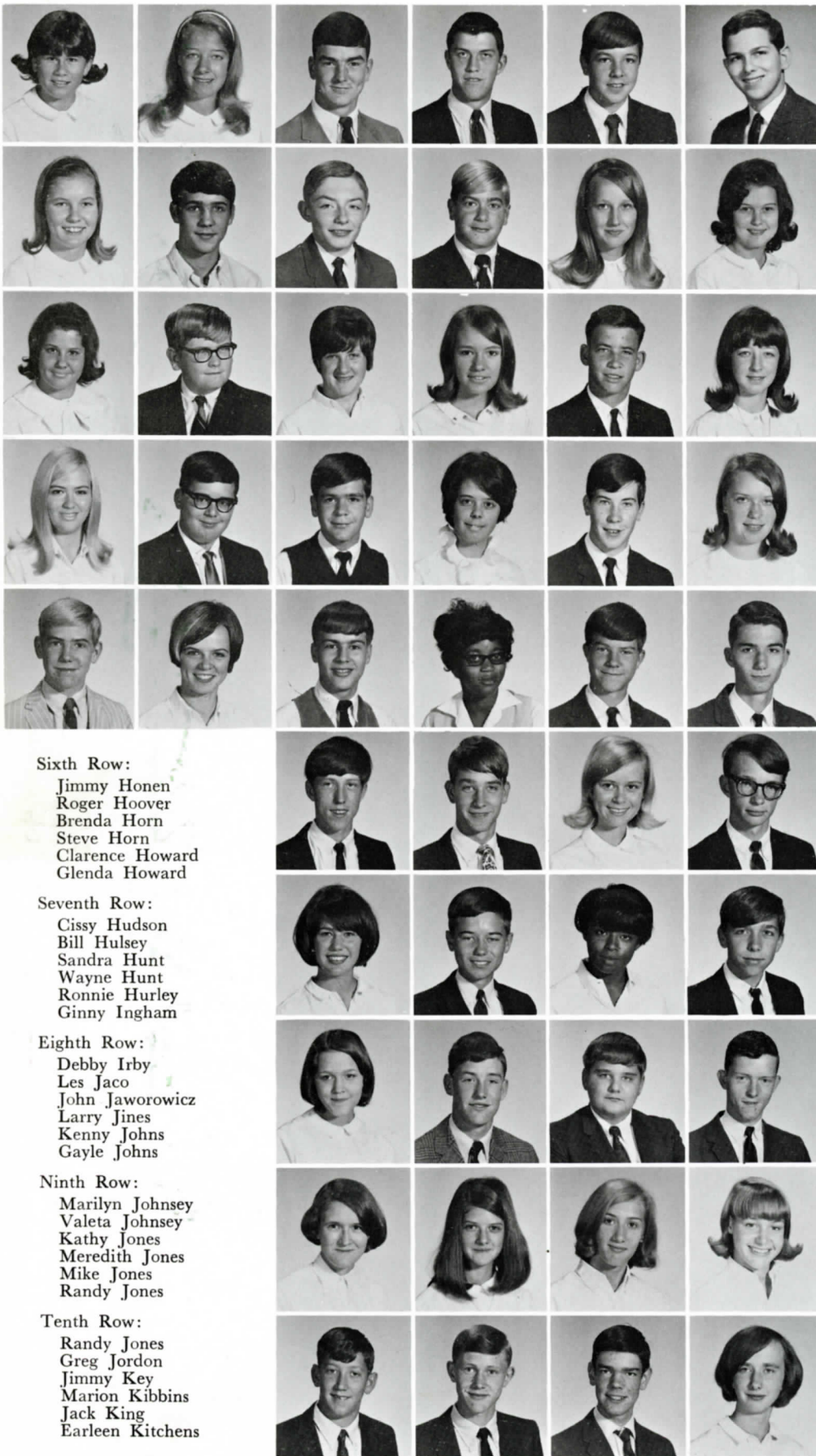
Debby Irby
Les Jaco
John Jaworowicz
Larry Jines
Kenny Johns
Gayle Johns

Ninth Row:

Marilyn Johnsey
Valeta Johnsey
Kathy Jones
Meredith Jones
Mike Jones
Randy Jones

Tenth Row:

Randy Jones
Greg Jordon
Jimmy Key
Marion Kibbins
Jack King
Earleen Kitchens



Sophomores and . . .



SOPHOMORE DAREDEVIL Charlie Rhodes takes the shortest route to his next class without even touching the floor. Antics like this will beget nothing but trouble, as a few sophomores discovered.

First Row:
Ted Lacy
Kathy Lamport



Second Row:
Sara Lancaster
Faith Lane



Third Row:
Candy Lane
Cathy Lawson



Fourth Row:
Thelma Jean Lax
Carl Lee



Fifth Row:
Patsy Legh
Debby Little



Sixth Row:
Starla Little
Ann Littlefield



Seventh Row:
Elisa Long
Nancy Lyles



Eighth Row:
Monte McAlexander
Sammy McCord
Sylvia McCullar
Lafonda McCully
Diane McDougale
Mike McDowell



Ninth Row:
Alice McHughes
Hal McIver
Steve McLemore
Dean Manley
Cathy Manning
David Marbury



Tenth Row:
Tommy Marbury
Ginny Martin
Kay Martin
John Mask
Pam Mathenia
Jackie May



Shaggy-Haired

First Row:

Connie Mayhall
 Ondra Merriwether
 Margaret Meyer
 Betty Michie
 Bill Miles
 Kathy Mitchell

Second Row:

Suzie Moore
 Sally Jo Moore
 Cathy Moran
 Ricky Morford
 Mike Morgan
 David Morse

Third Row:

Gary Morse
 Evelyn Mosley
 Carol Mullins
 Terry Mullins
 Walton Mullins
 Carla Murphey

Fourth Row:

Evella Murphy
 Andy Neely
 Joe Nelson
 Brooks New
 Pam Newbill
 Frank Neudecker

Fifth Row:

Jack Nunnery
 Eddie Osborn
 Mary Beth Overton
 Billy Ozment
 Terrie Page
 Pat Parish

Sixth Row:

Vann Parker
 Charles Patterson
 Wilson Pegram
 Tommy Pentecost
 Ronnie Perkins
 Jennifer Phillips

Seventh Row:

John Phillips
 Philip Pigue
 Kent Pledge
 Michelle Pollard
 Betty Prewitt
 Mary Rainey

Eighth Row:

Henry Ramey
 Allan Ramsaur
 Magda Randolph
 Buddy Rawls
 Wanda Reams
 Charles Rhodes

Ninth Row:

Nina Rhodes
 Connie Richardson
 Jim Richardson
 Danny Rivers
 Danny Roach
 Kevin Roby

Tenth Row:

Pam Rose
 Terri Rundquist
 Sharon Rush
 Betty Russom
 Andy Saunders
 Jenny Seabrook



Sophomores

First Row:

Betty Joan Shelton
 Karen Shelton
 Skippy Shelton
 Buddy Sheppard
 Don Shuter
 Mike Simmons



Second Row:

Carroll Sipes
 Charlotte Sireilles
 Jacqueline Sireilles
 Vernita Smith
 Vickie Smith
 Karen Snyder



Third Row:

Jimmy Spain
 Ricky Staples
 Tripp Stegall
 Glenn Stephenson
 Ralph Stewart
 Robert Stewart



Fourth Row:

Addison Stone
 Tim Stratton
 Paul Sutherland
 Regina Temple
 Lynn Terry
 Bill Thomas



Fifth Row:

Jimmy Thomas
 Bobby Tipton
 Carl Toy
 Brenda Transom
 John Trull
 Jim Trulock



Sixth Row:

Teresa Tucker
 Wesely Turner
 Richard Utley
 Ronny Walker
 Brenda Wallace
 Bill Warmath



Seventh Row:

Emily Webb
 Cecila Wells
 Mike Wheatley
 Marilyn Wheeler
 Bobby Wilder
 Donnie Wilkinson



Eighth Row:

Cindy Williams
 Jennie Williams
 Joe Williams
 David Williams
 Jackie Williamson
 David Wilson



Ninth Row:

Jimmy Wilson
 Scott Wingate
 Mike Winslow
 Ricky Winslow
 David Woodall
 Larry Worthly



Tenth Row:

Charlotte Wright
 Linda Wyatt
 Katherine Yarbrough
 Rhonda Yates
 Pat Young
 Phillip Young